



27017—86

(6300—88)

«

fasteners. Terms and definitions

27017—86
(CT
6300—88)

1201

01.01.88

«

11708.

(D),

(),

(F)

— , — ,
" , *
(, 1).

1.
Fastener

- 2.
- D. Schraube
- E. Bolt
- F. Boulon

- 3.
- D. Schraube
- E. Screw
- F. Vis

- 4.
- D. Holzschraube
- E. Wood screw
- F. Vis a bois

- 5.
- D. Stiftschraube
- E. Stud
- F. Goujon

- 6.
- D. Stitt
- E. Pin
- F. Goupille

- 7.
- D. Mutter
- E. Nut
- F. Ecrou

, * ,

8.				-
D. Scheibe				
E. Washer			()	
F. Rondelle				
9.				
D. Splint				
E. Split pin				
F. Goupille				
10.				-
D. Niet				
E. Rivet				-
F. Rivet				

11.				-
D. Schraube mit Ansatz-				
schafft				
E. Shoulder bolt				
F. Corps de boulon ren-				
forcee				
12.				
D. Augenschraube				
E. Eye bolt				
F. Corps de boulon a				
oeil				
13.				-
D. Pafischraube				
E. Fit bolt				
F. Corps de boulon ajus-				
table				
14.				--
D. Steinschraube				
E. Foundation bolt				-
F. Tige de scellement		+		-
15.				-
D. Schraube mit Dehn-				
schafft				
E. Screw with waisted				
shank				
F. Vis a tige allegee				
16.				-
D. Blechschraube				
E. Self-tapping screw				
F. Vis a tole				

17.

18.

. Set screw

19.

20.

D. Kronenmutter

E. Hexagon slotted nut

F. Ecrou hexagonal a
creneaux

21.

D. Kronenmutter

E. Hexagon castle nut

F. Ecrou hexagonal
creneaux degages

22.

D. Hutmutter

E. Acorn nut

F. Ecrou borgne a ca-
lotte

23.

D. Flügelmutter

E. Wing nut

F. Ecrou a oreilles

24.

D. Scheibe

E. Plain washer

F. Rondelle plate

25.

D. Federring

E. Spring washer

F. Rondelle elastique

26.

D. Scheibe mit Lappen
oder Nasen

E. Tab washer

F. Frein d'ecrou

27.

28.

29.

30.

()

- D. Kopf
- E. Head
- F. Tete

31.

- D. Ansatz
- E. Neck
- F. Collet

32.

- D. Bund
- E. Collar
- F. Ernbase

33.

< »

- D. Telleransatz
- E. Washer face
- F. Collette

34.

35.

36.

- D. Nase
- E. Nib
- F. Ergot

27.

. Gimlet point

-	2
	13
	12
	13
	11
	.14
	37
	32
	32
	3
	15
	16
	17
	13
	33
	33
	7
-	23
	22
	21
	20
	30
	ia
	28
	27
	1
	31
	31
	29
	29
	36
	35
	32
	9
	25
€	33
»	33
	24
	25
	25
	35
	.35
	34
	34
	5
	9
	5
	19
	4
Ansatz	31
Augenschraube	12
Blechschaube	15

Bund	32
Federring	25
Fiiigelmuttcr	23
Holzschraube	4
Hutmutter	22
Kopf	30
Kronenmutter	20, 21
Mutter	7
Nase	36
Niet	10
PaBschraube	13
Scheibe	8, 24
Scheibe mit Lappen oder Nasen	26
Schraube	2, 3
Schraube mit Ansatzchaft	11
Schraube mit Dehnschaft	15
Splint	9
Steinschraube	14
Stift	6
Stiftschraiiibe	5
Telleransatz	33

Acorn nut	22
Bolt	2
Collar' .	32
Eye bolt	12
Fastener	1
Fit bolt	13
Foundation bolt	14
Gimlet point	37
Head	30
Hexagon castle nut	21
Hexagon slotted nut	20
Neck	31
Nib	36
Nut	7
Pin	6
Plain washer	24
Rivet	10
Screw	3
Screw with waisted shank	15
Self-tapping screw	16
Set screw	18
Shoulder bolt	11
Split pin	9
Spring washer	25
Stud	5
Tab washer	26
Washer	8
Washer face	33
Wing nut	23
Wood screw	4

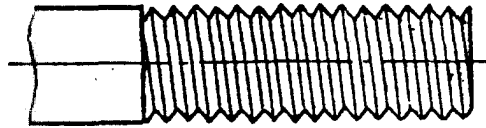
Boulon	2
Collerette	33
Collet	31
Corps de boulon ajustable	13
Corps de boulon a oeil	12
Corps de boulon renforcee	11
Ecrou	7
Ecrou a oreilles	23
Ecrou borgne a calotte	22
Ecrou hexagonal a creneaux	20
Ecrou hexagonal a creneaux degages	21
Embase	32
Ergot	36
Frein d'ecrou	26
Goujon	5
Goupille	6, 9
Rivet	10
Rondelle	»
Rondelle elastique	25
Rondelle plate	24
Tete	30
Tige de scellement	14
Vis	3
Vis a bois	4
Vis a tige allegee	15
Vis a tole	16

1.

»

I.

1.1.



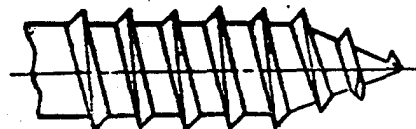
1.2.



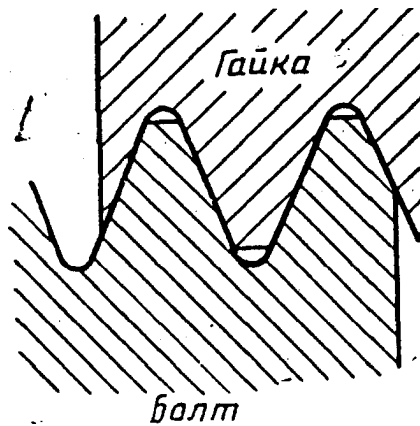
1.3.



1.4.



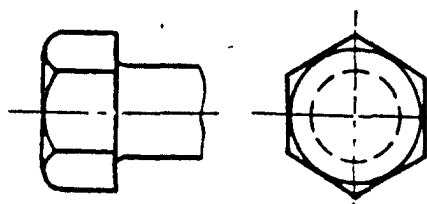
1.5.



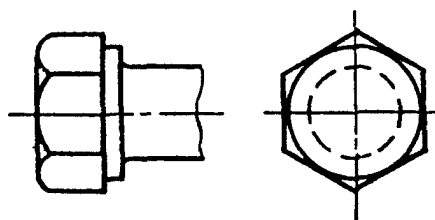
1.6.

2.

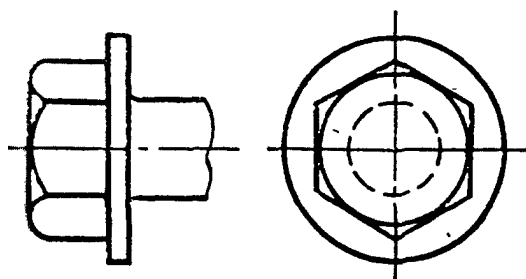
2.1.



2.2.



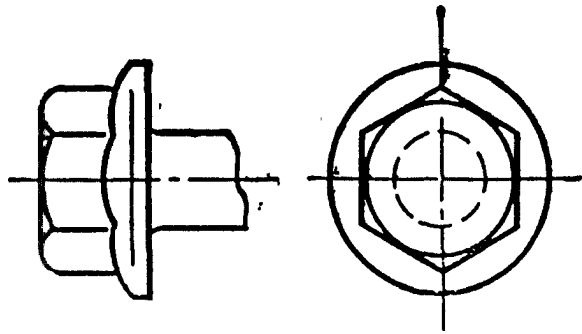
2.3.



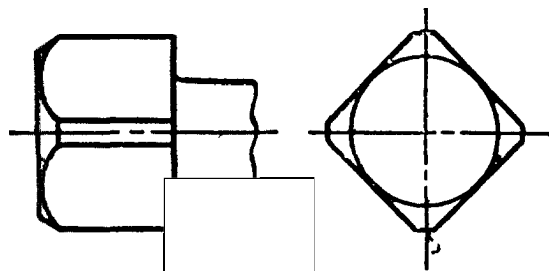
*

2.4.

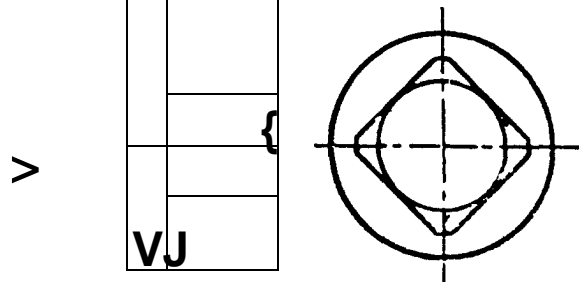
*



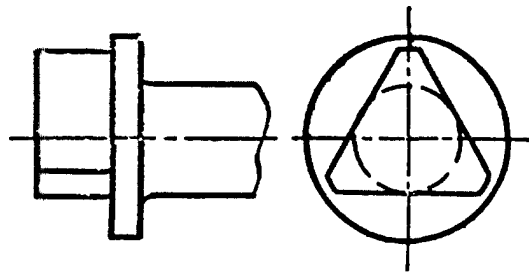
2.5.



2.6.

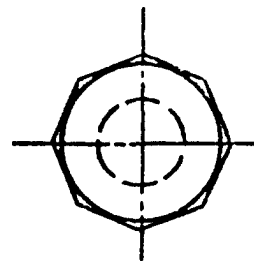


2.7.

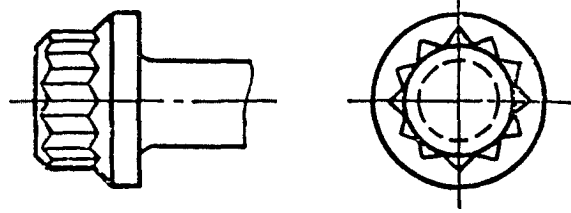


2.8.

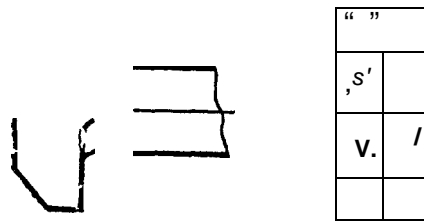
- - -



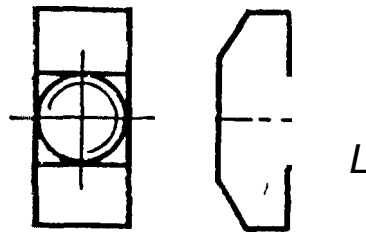
2.9.



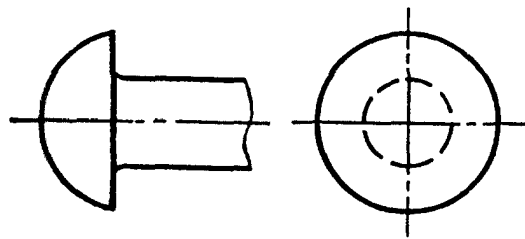
2.10.



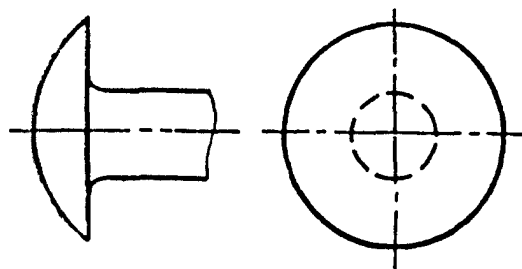
2.11. 1



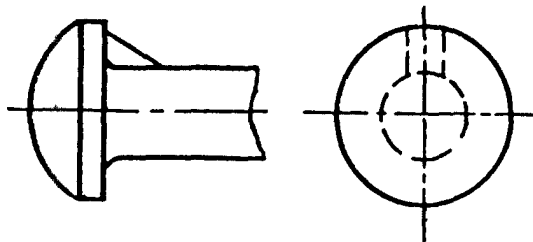
2.12. Полукруглая головка



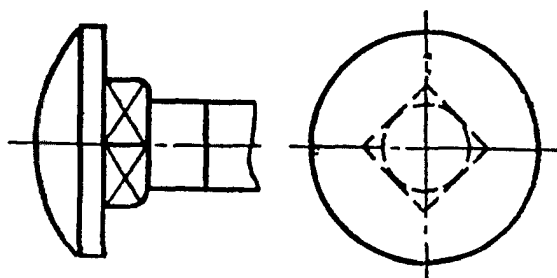
2.13. Низкая полукруглая головка



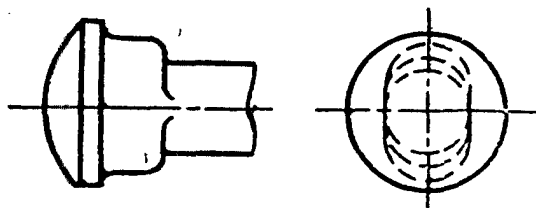
2.14. Полукруглая головка с усом



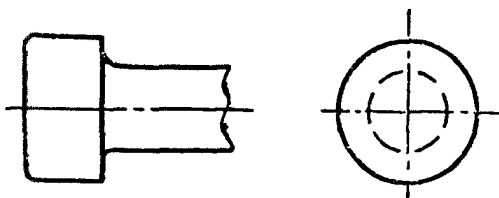
2.15. Низкая полукруглая головка с квадратным подголовком



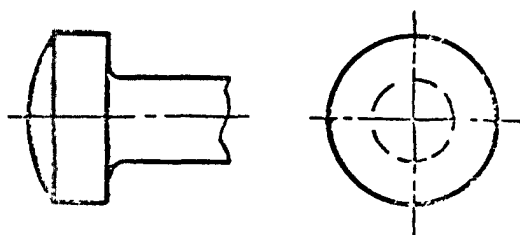
2.16. Полукруглая головка с овальным подголовком



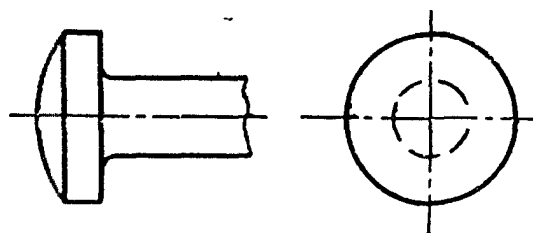
2.17. Цилиндрическая головка



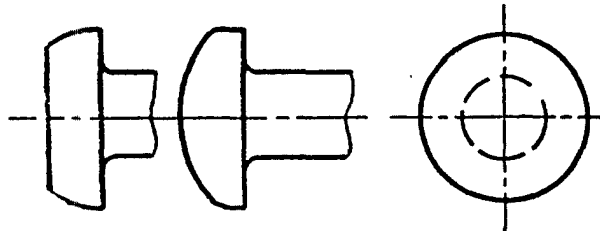
2.18. Цилиндрическая головка со сферой



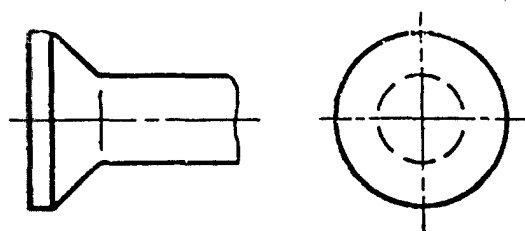
2.19.



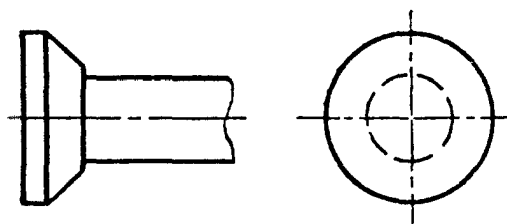
2.20. Цилиндрическая
скругленная головка



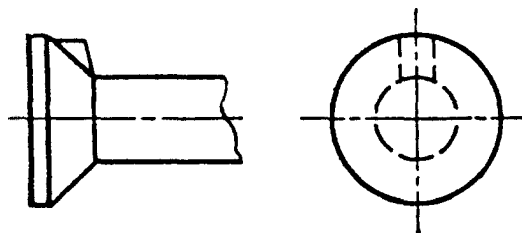
2.21. Потайная головка



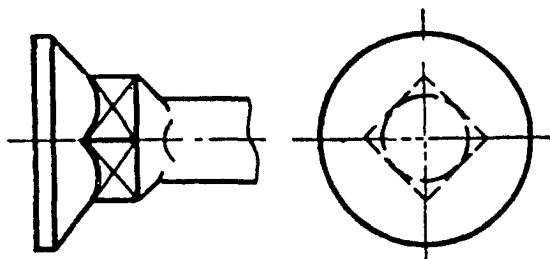
2.22. Потайная головка с
заплетиком



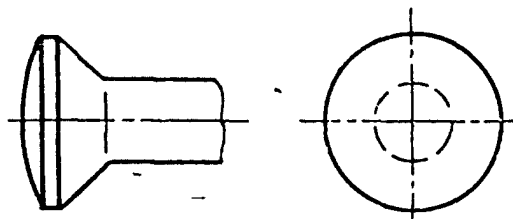
2.23.

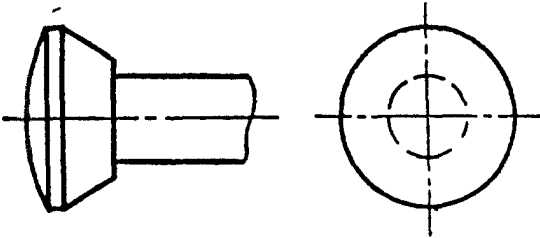
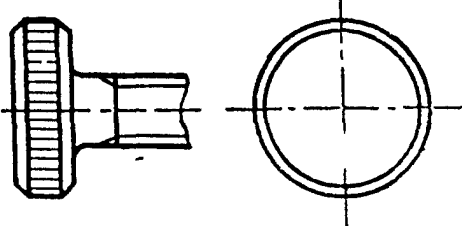
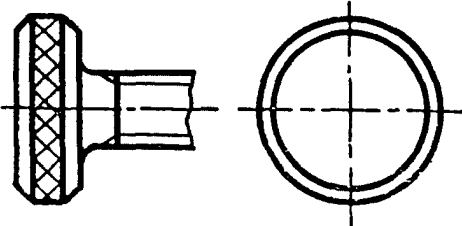
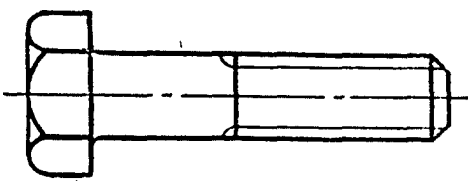
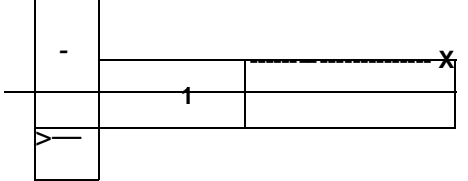
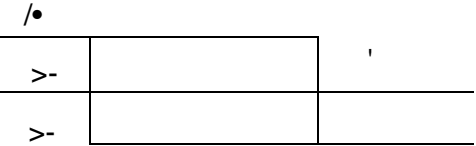


2.24.

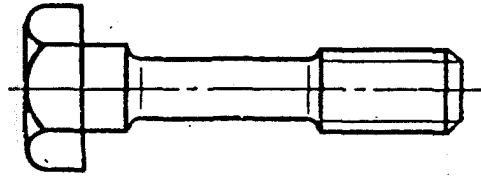


2.25. Полупотайная головка

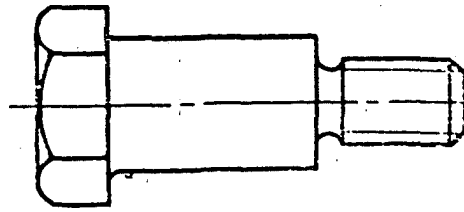


Наименование	Чертеж
2.26. Полупотайная головка с заплечиком	
2.27. Рифленая цилиндрическая головка с прямым рифлением	
2.28. Рифленая цилиндрическая головка с сетчатым рифлением	
3.	
3.1. (,)	
3.2. (,)	
3.3. ,)	

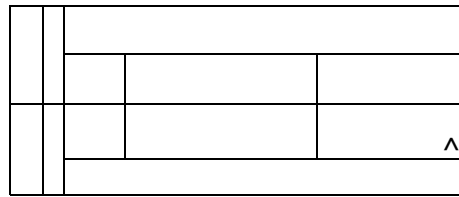
3.4. , -
(, -
!



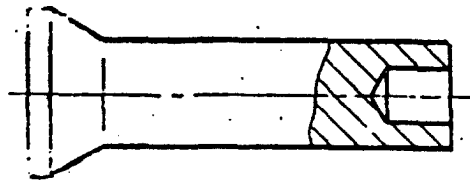
3.5. -



3.6. -

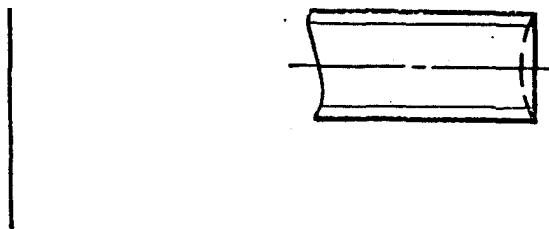


3.7. -

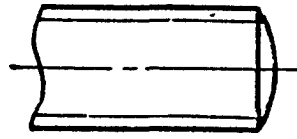


4.

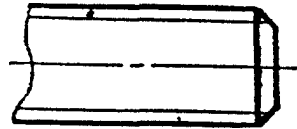
4.1.



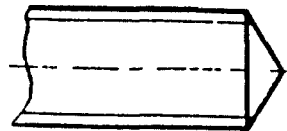
4.2.



4.3.

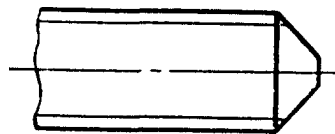


4.4.

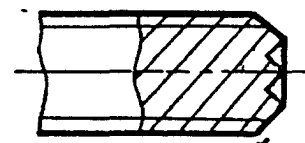
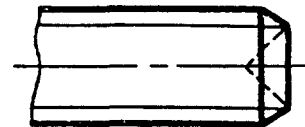


4.5.

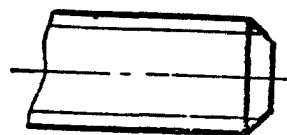
-



4.6.



4.7.

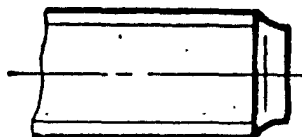


4.8.

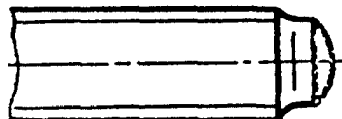
-

		1	
<i>l</i>			

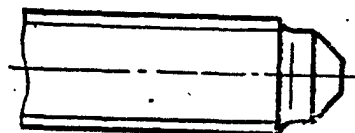
4.9.



4.10.



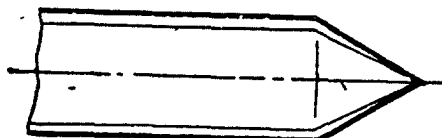
4.11.



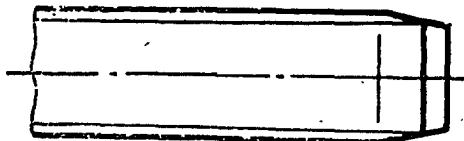
4.12.

-
-

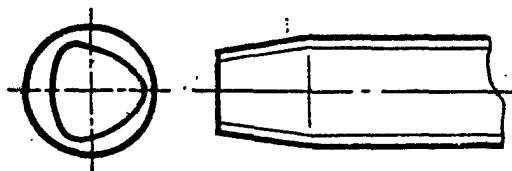
4.13.



4.14.



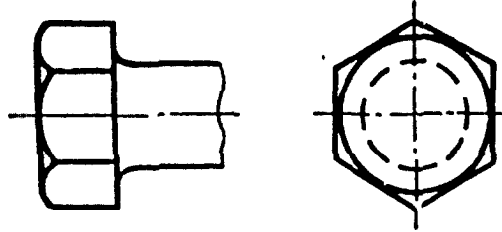
4.15. Конец резьбовыдав-
ливающего винта



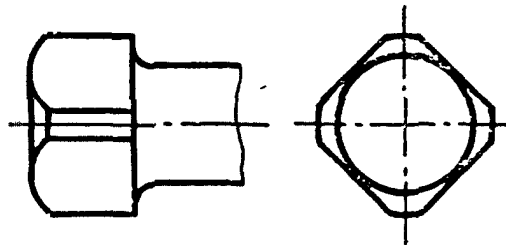
4.16.

5.

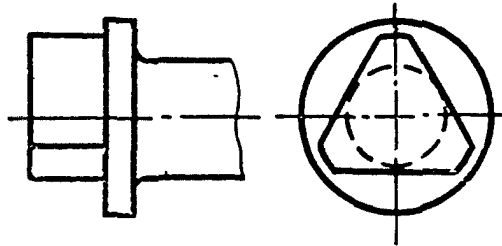
5.1.



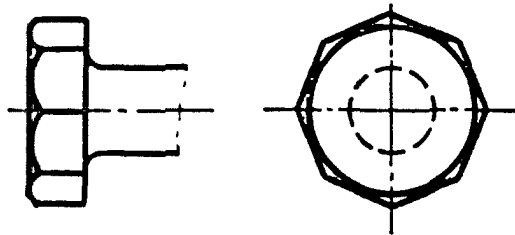
5.2. Квадрат



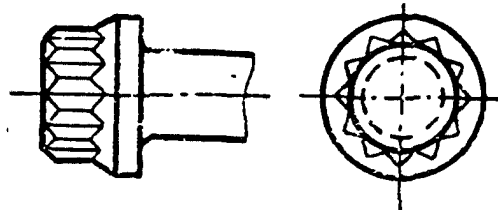
5.3. Трехгранник



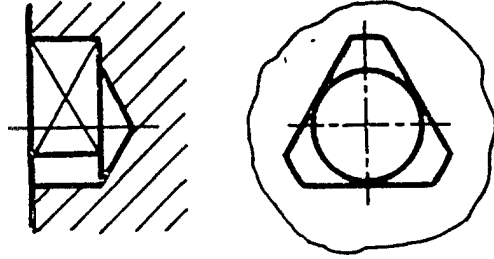
5.4. Восьмигранник



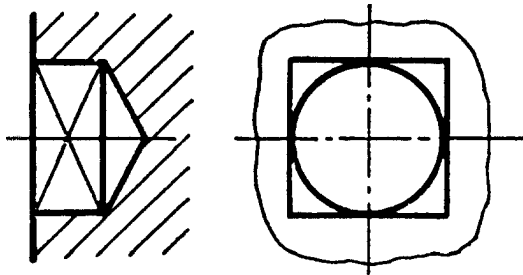
5.5. Двенадцатигранник



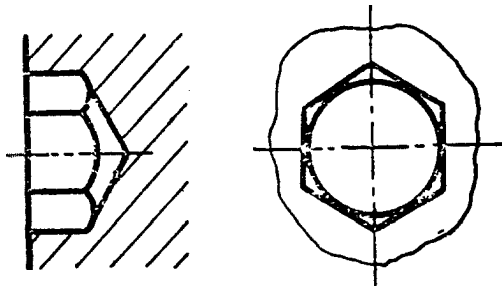
5.6.



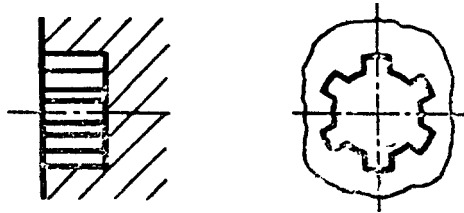
5.7.



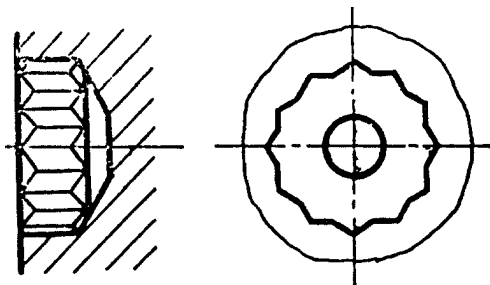
5.8.



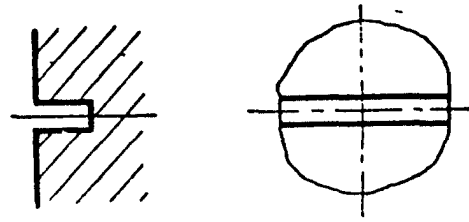
5.9.



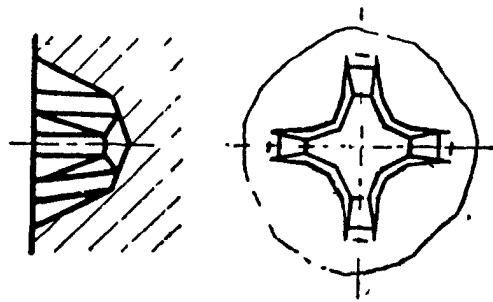
5.10.



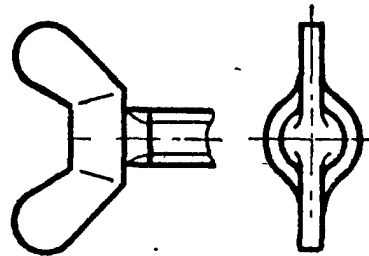
5.11. Прямой шлиц



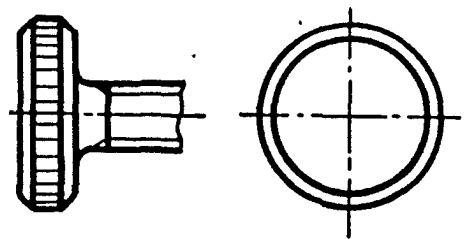
5.12. Крестообразный шлиц



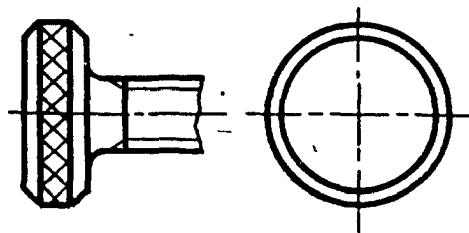
5.13. Барашек



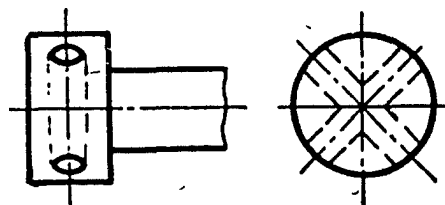
. 5.14.



5.15.

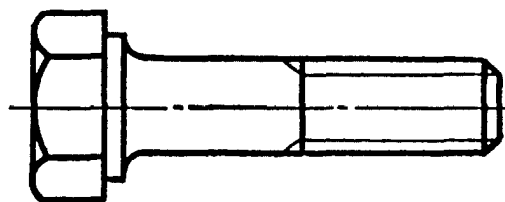


5.16.

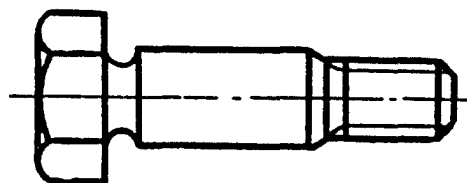


6.

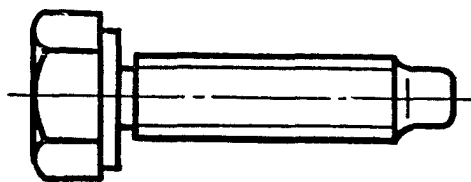
6.1. Болт с шестигранной головкой



6.2. Ступенчатый болт с шестигранной головкой



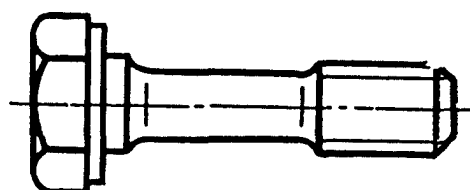
6.3.

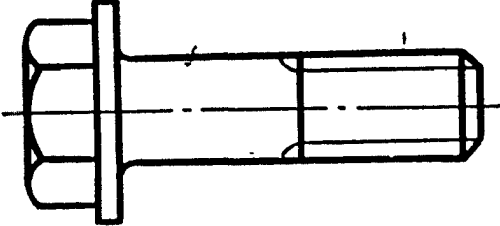
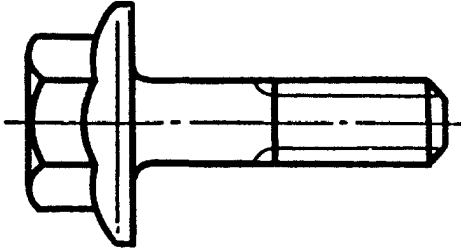
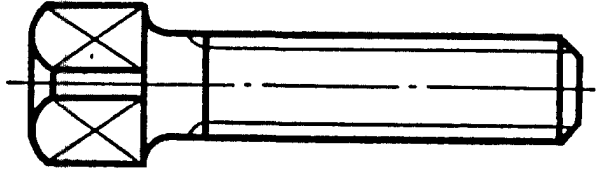
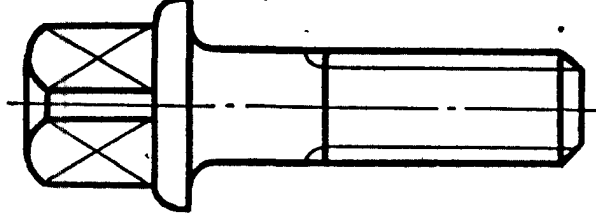
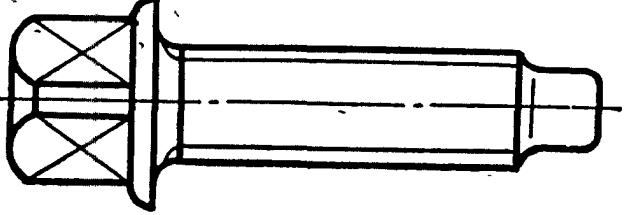


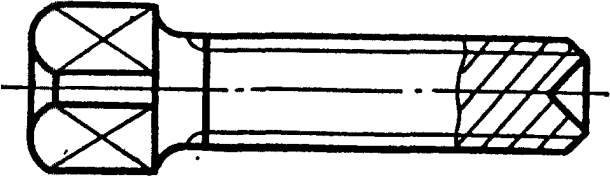
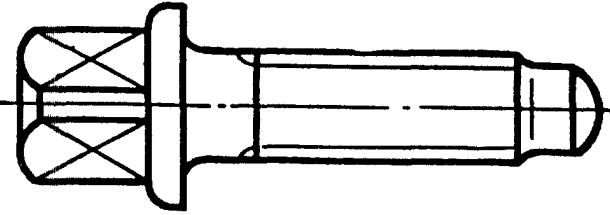
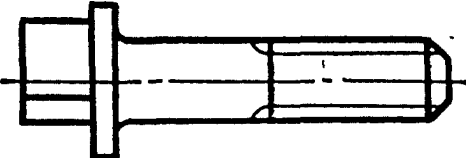
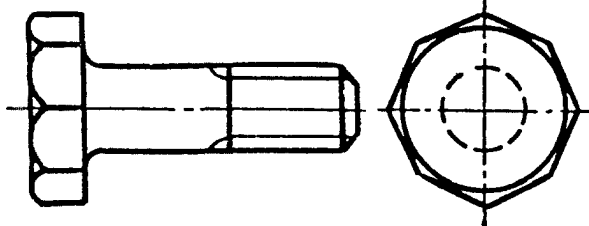
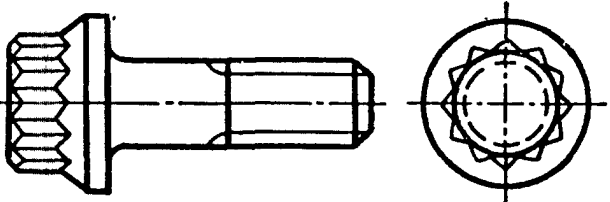
6.4.



6.5.

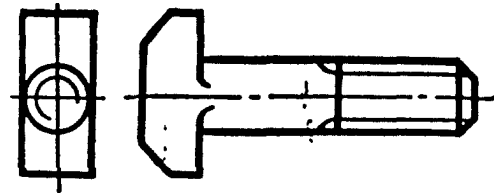


Наименование	Чертеж
6.6. Болт с шестигранной головкой с цилиндрическим буртом	
6.7. Болт с шестигранной головкой с фланцем	
7. 7.1. Винт с квадратной головкой	<p style="text-align: center;">()</p> 
7.2. Винт с квадратной головкой с цилиндрическим буртом	
7.3. Установочный винт с квадратной головкой и цилиндрическим концом	

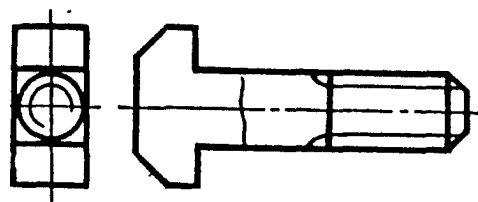
Наименование	Чертеж
<p>7.4. Установочный винт с квадратной головкой и за- сверленным концом</p>	
<p>7.5. Установочный винт с квадратной головкой с цилиндрическим буртом и ступенчатым концом со сферой</p>	
<p>8.</p>	<p>-</p>
<p>8.</p>	
<p>9.</p>	<p>-</p>
<p>9.</p>	
<p>10.</p>	<p>-</p>
<p>10.</p>	

11. -

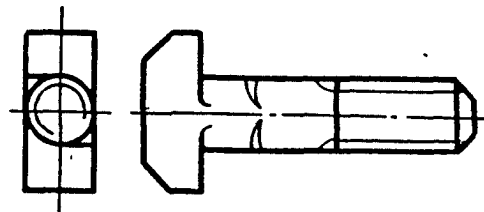
11.1. -



11.2. • -

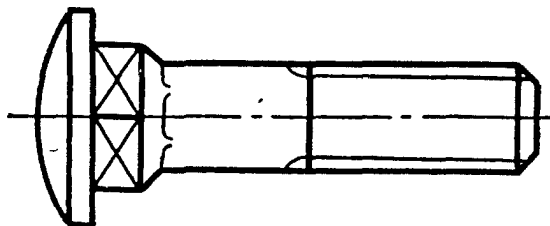


11.3. -

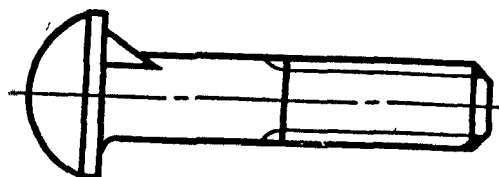


12.

• 12.1. -



12.2.

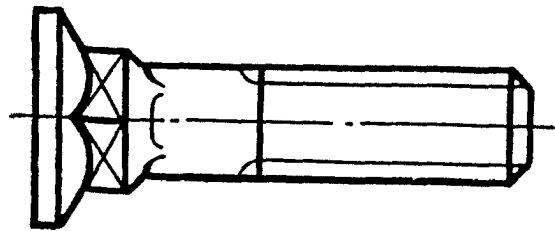


12.3.	,	-	Λ-----	
			
12.4.	.	-	—«	
			V] [1_J-2	

13.

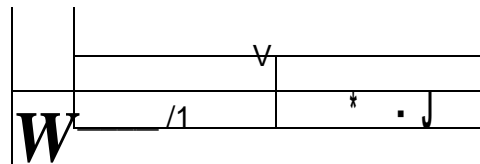
13.1.

-

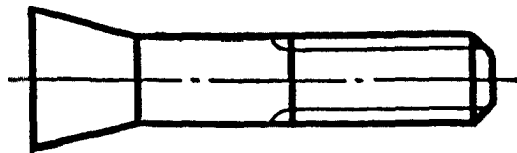


13.2.

-



13.3.



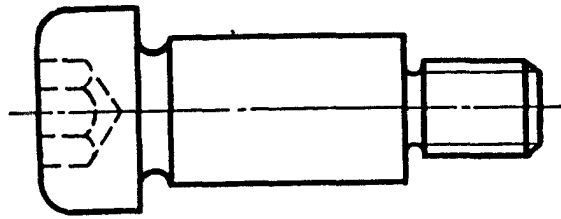
14.

14.1.

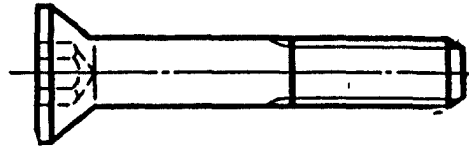
-

---N	Λ-----		
—<			
—	f-----		

14.2. Ступенчатый винт с цилиндрической головкой и шестигранным углублением под ключ

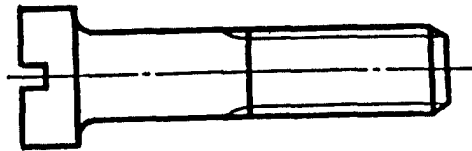


14.3. Винт с потайной головкой и шестигранным углублением под ключ

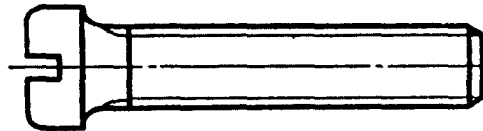


15

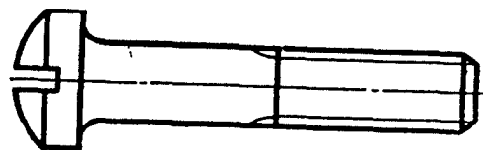
15.1. Винт с цилиндрической головкой



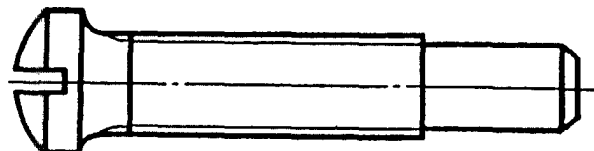
15.2. Винт с цилиндрической скругленной головкой



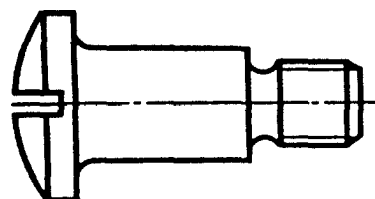
15.3. Винт с цилиндрической головкой со сферой



15.4.



15.5.



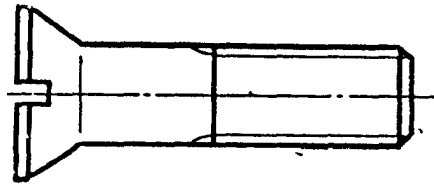
15.6.



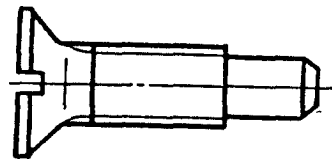
15.7.



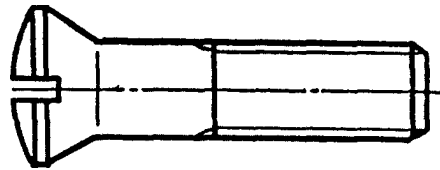
15.8.



15.9.



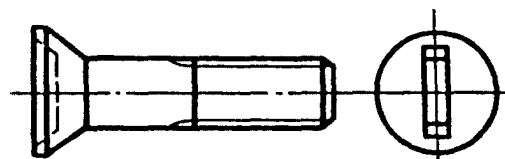
15.10.



15.11.



15.12.

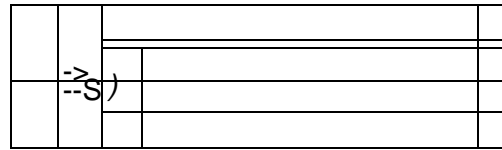


15.13.			
	tl	

16.

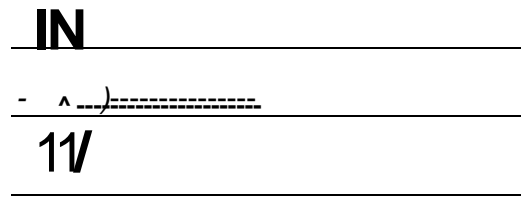
16.1.

-

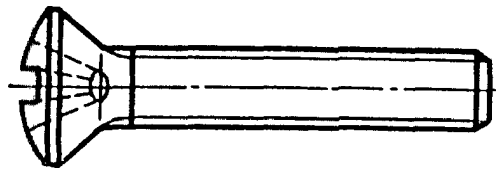


16.2.

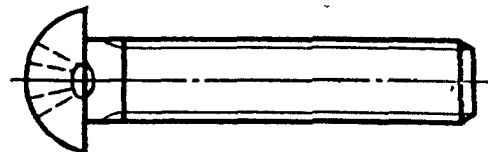
-



16.3.

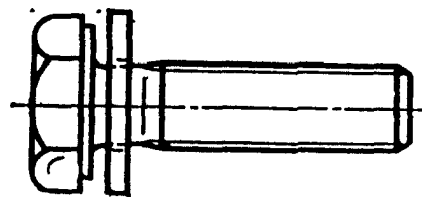


16.4.



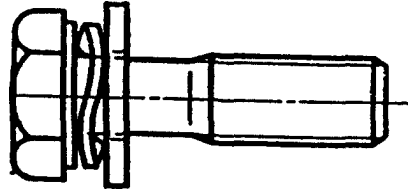
17.

17.1.



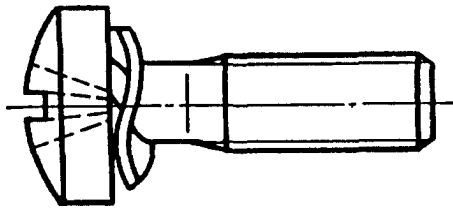
17.2.

-

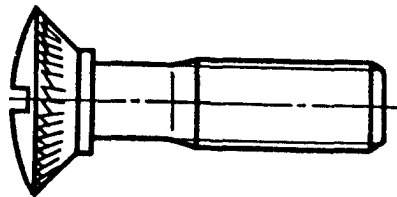


17.3.

-



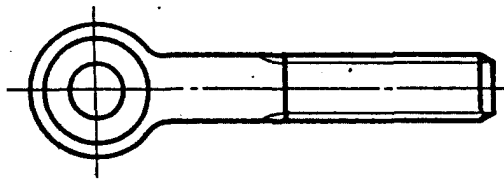
17.4.



18.

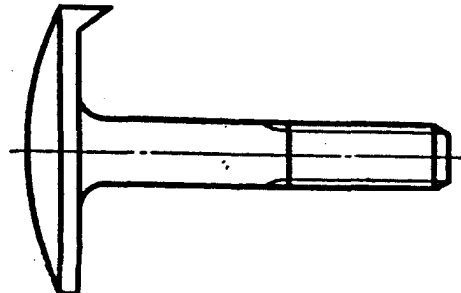
18.1.

|



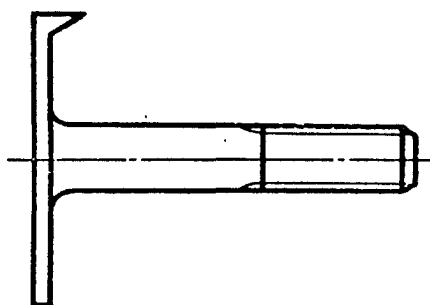
18.2.

-



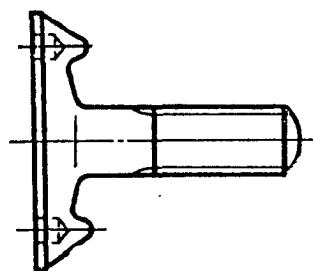
18.3.

-

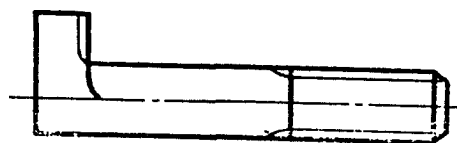


18.4.

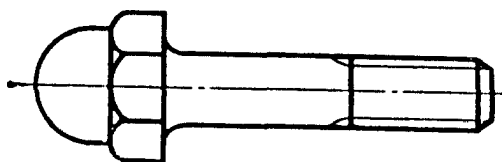
-



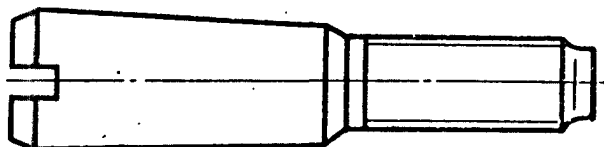
18.5.



18.6.

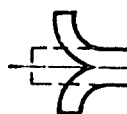


18.7.



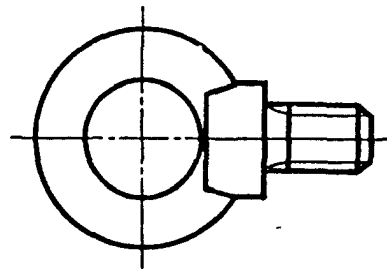
18.8.

/



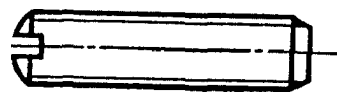
18.9.		-gg	
18.10. -			
			X-

18.11. -

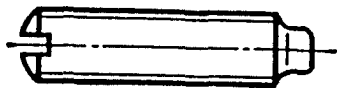


19.

19.1.



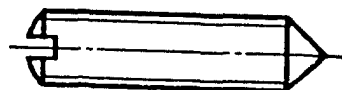
-19.2.



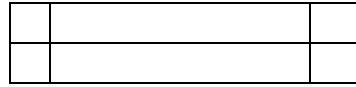
19.3.



19.4.



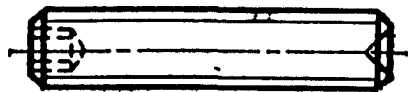
19.5.



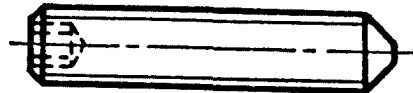
19.6.



19.7.



19 8.



20.

20.1.



20.2.

20.3.

20.4.



20.5.		
20.6.	-	J 1
	-	

20.7.



21.

21.1.	-		1.
21.2.			
21.3.	-	*	-- * -
21.4.	-		
21.5.			

21.6.	- -	
21.7.	- -	
21.8.		

22.

22.1.

-



22.2.

-

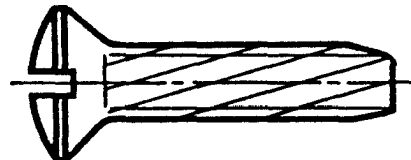


22.3.



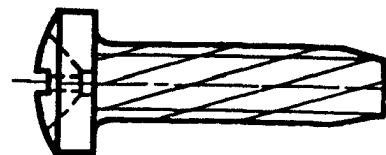
22.4.

-

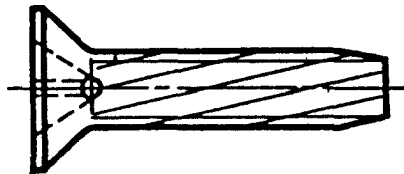


22.5.

-



22.6.

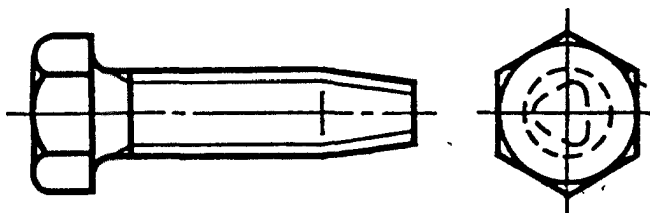


22.7.



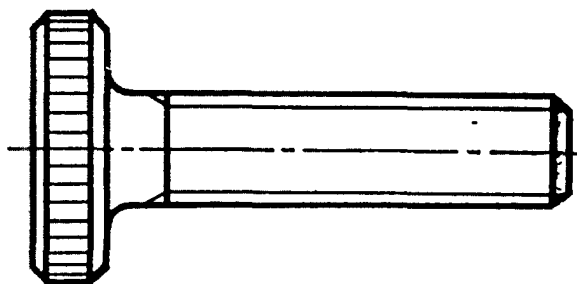
23.

23.

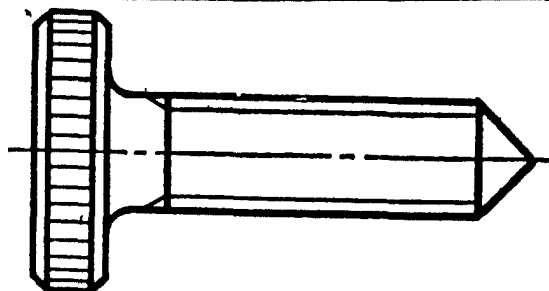


24.

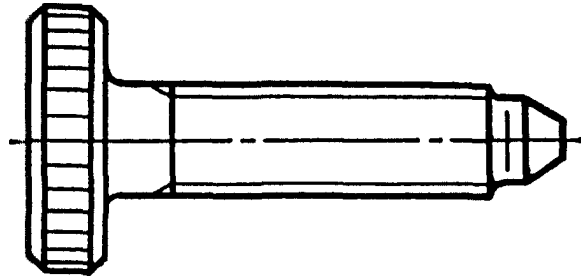
24.1. Винт с рифленой цилиндрической головкой и плоским концом



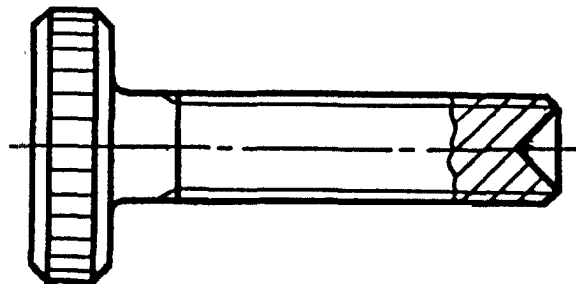
24.2. Винт с рифленой цилиндрической головкой и коническим концом



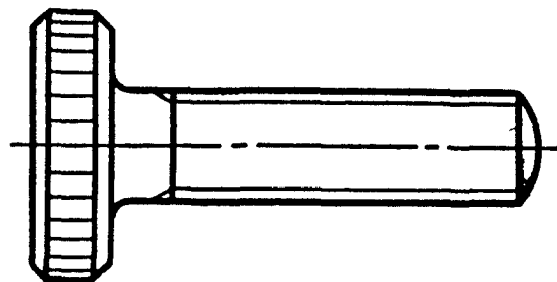
24.3.



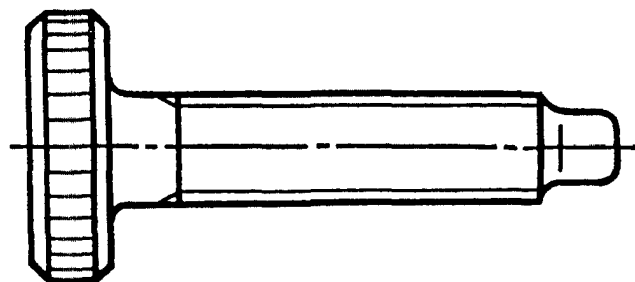
24.4.



24.5. Винт с рифленой цилиндрической головкой и сферическим концом

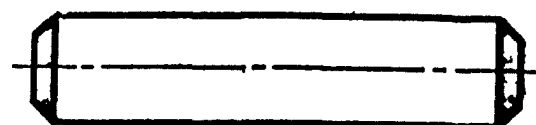


24.6. Винт с рифленой цилиндрической головкой и цилиндрическим концом

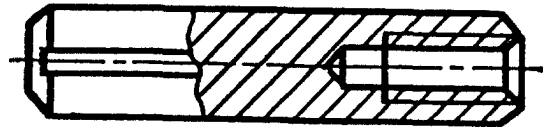


25.

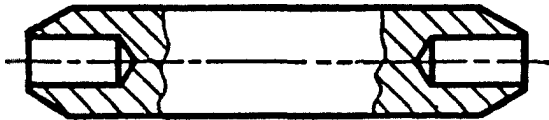
25.1.



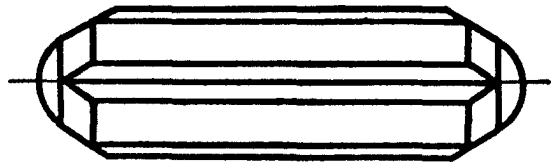
25.2.



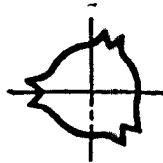
25.3.



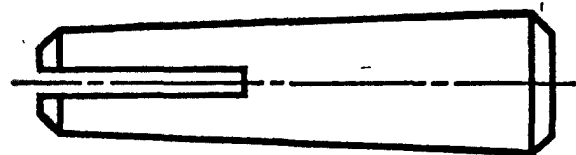
25.4.



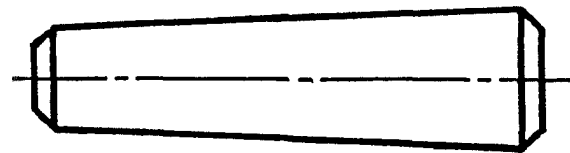
25.5. Цилиндрический на-
сеченный штифт с кониче-
скими насечками



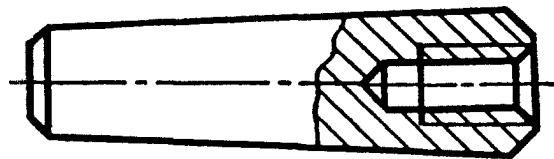
25.6. Конический развод-
ной штифт



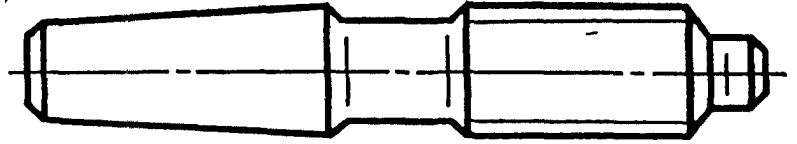
25.7. Конический штифт



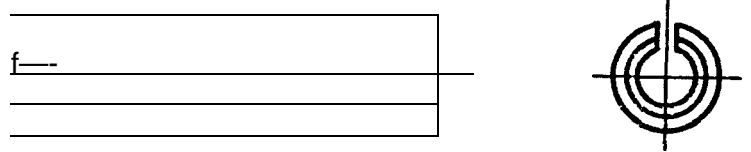
25.8.



25.9.



25.10,



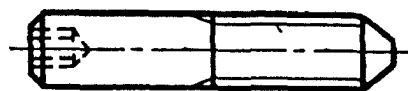
25.11.



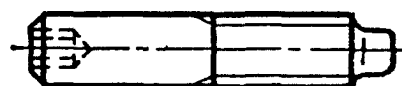
25.12.



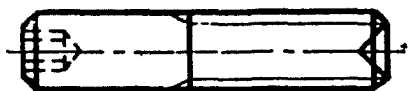
25.13.



25.14.



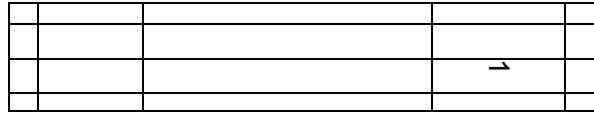
25.15.



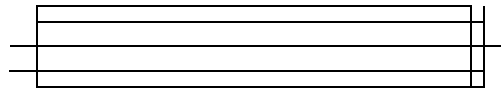
26.1.	26.

• 26.2. .

*



26.3.



26.4.



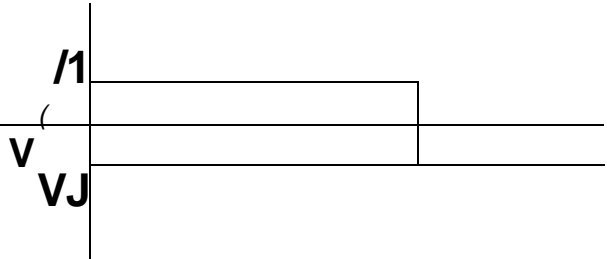
26.5.



27.

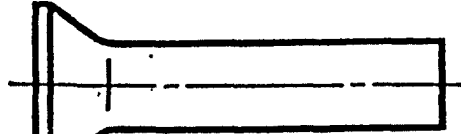
27.1,

-



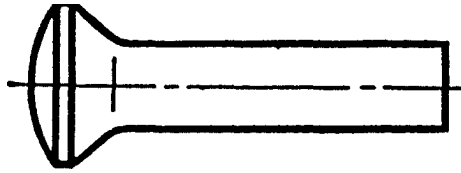
27.2.

27.3.



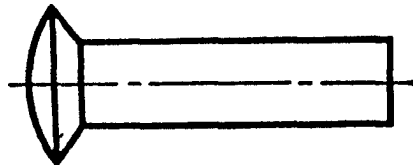
27.4.

-

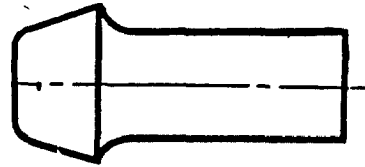


27.5.

-



27.6.



27.7.

-



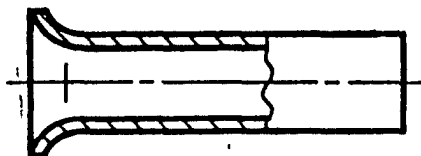
27.8.

-

v/

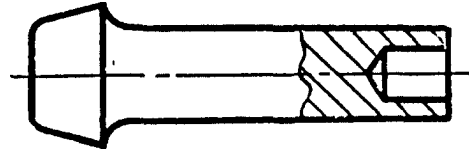
27.9.

-



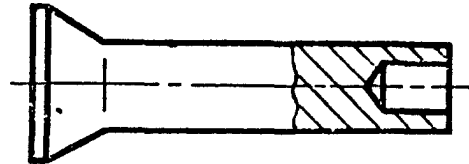
27.10.

-



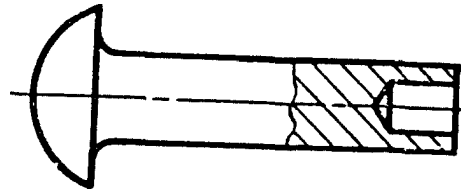
27.11.

-



27.12.

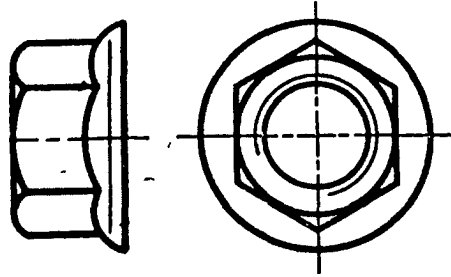
-



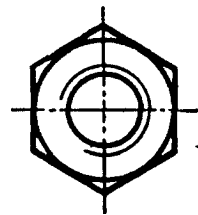
28.

28.1.		j) 1	
28.2.	-	l	
28.3.		→	
		S-----	$\frac{1}{1} \frac{1}{1} \frac{1}{1}$

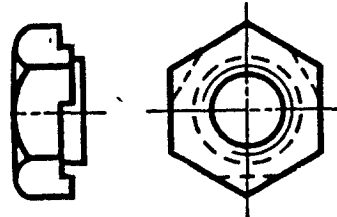
28.4.



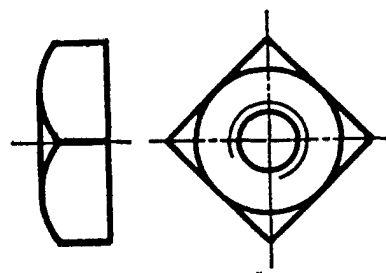
28.5.



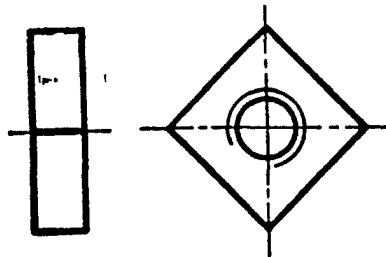
28



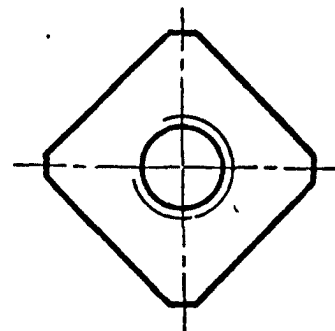
28.7. Квадратная гайка



28.8. Квадратная низкая гайка

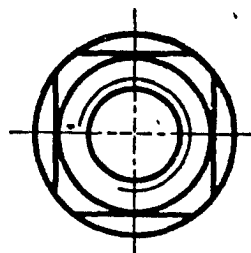


28.9.

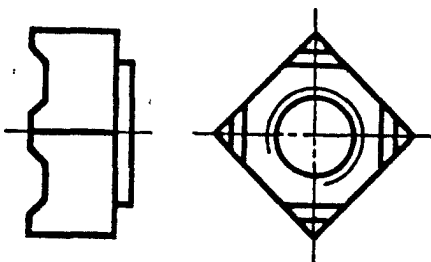


28.10.

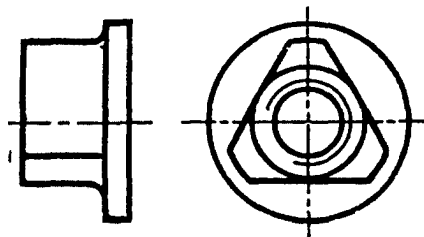
^



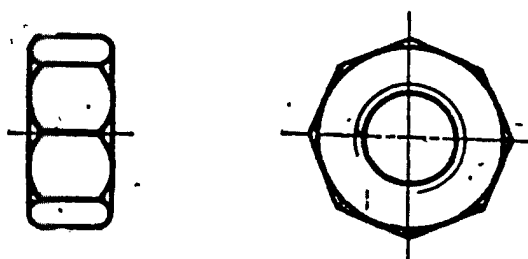
28.11.



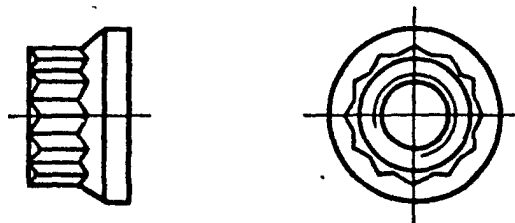
28.12.



28.13. Восьмигранная гайка



28.14.



28.15.

--	--	--	--

28.16.

	<p>A technical drawing showing a chamfered edge of a part. A dimension line with arrows indicates the length of the chamfer.</p>		<p>A large, bold, stylized letter 'V' with a double-stroke effect.</p>	
--	--	--	--	--

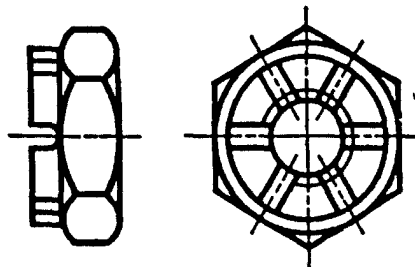
28.17.

	<p>A small, solid black arrow pointing to the right.</p>		<p>Two technical drawing symbols for chamfered edges. The top one shows a chamfered edge with a double-stroke 'V' symbol. The bottom one shows a chamfered edge with a single-stroke 'V' symbol.</p>	
--	--	--	--	--

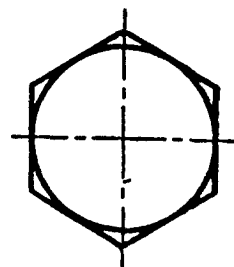
28.18.

		<p>Technical drawing symbols for chamfered edges, including a chamfered edge with a double-stroke 'V' symbol and a chamfered edge with a single-stroke 'V' symbol.</p>	<p>A large, bold, stylized number '1' with a double-stroke effect.</p>	
--	--	--	--	--

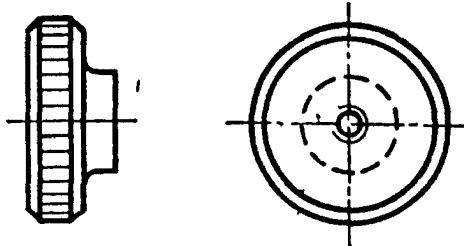
28.19. Шестигранная низ-
кая корончатая гайка



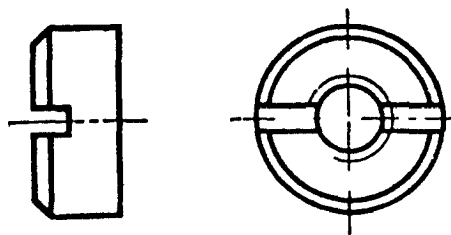
28.20.



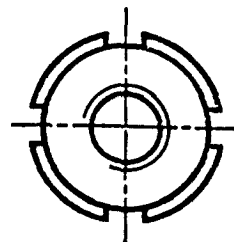
28.21.



28.22.



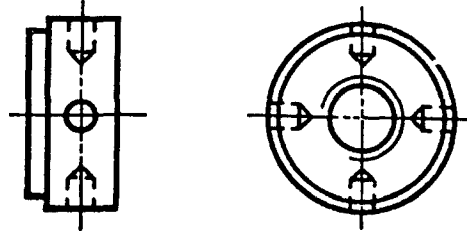
28.23.



>

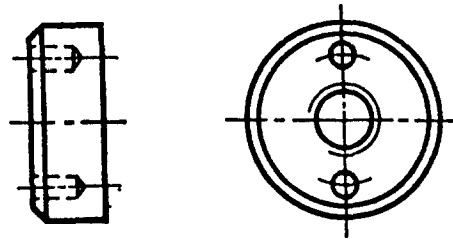
28.24.

-



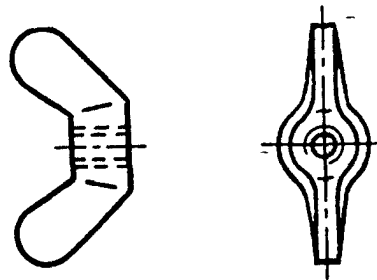
28.25.

-



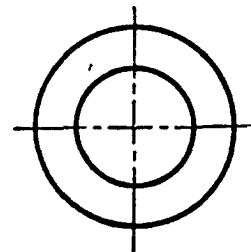
28.26.

-

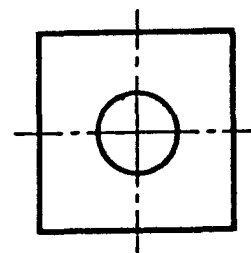


29.

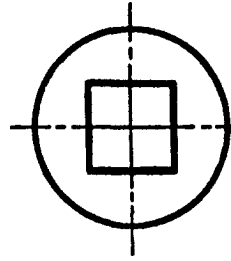
29.1.



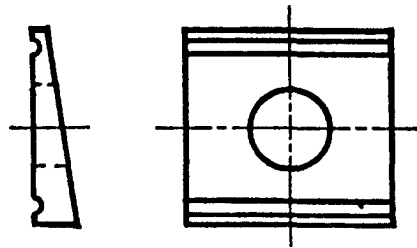
29.2. ^



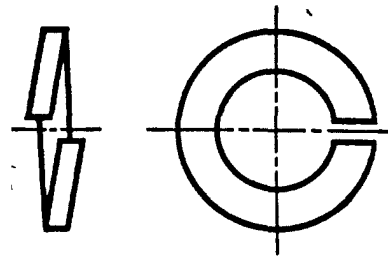
29.3.



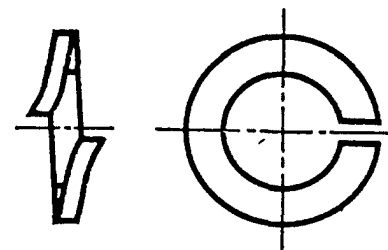
29.4.



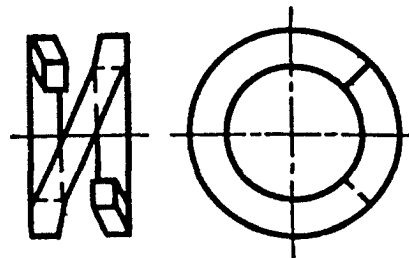
29.5. Пружинная шайба



29.6. Пружинная шайба с отогнутыми концами



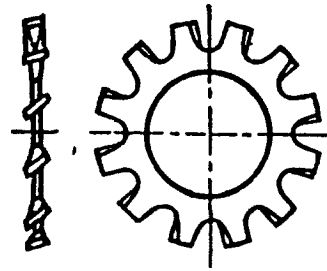
29.7.



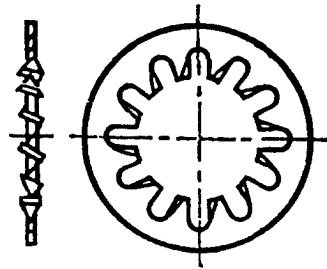
<p>29.8.</p> <p>-</p>	<p>1 ^</p>	<p>\\</p> <p>hH-</p>	
<p>29.9.</p>	<p>1#</p>	<p>- -</p> <p>w</p>	
<p>29.10.</p>		<p>11 17 -</p>	<p>LJLL \</p> <p>/ /</p>
<p>29.11.</p> <p>-</p> <p>-</p>	<p>&</p>	<p>^L// /</p>	<p>AA.</p> <p>i // 7 ^</p>

29.12. -

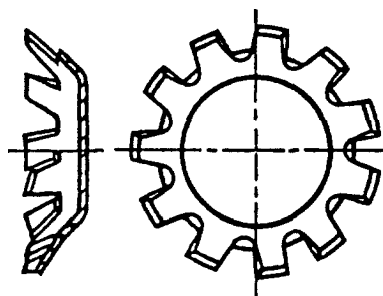
29.13.-



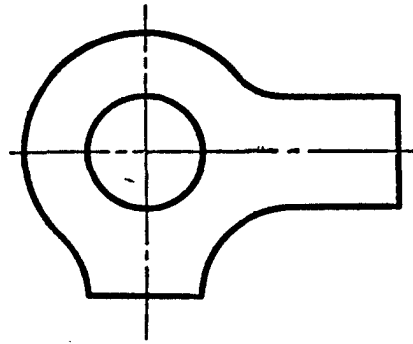
29.14.



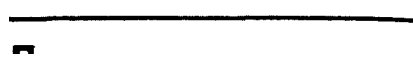
29 15. "



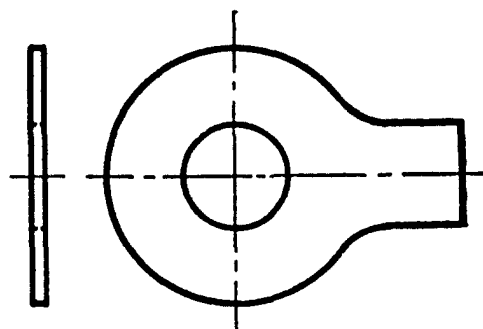
29.16.



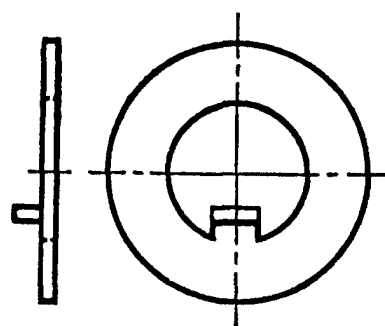
29.17.



29.18. Стопорная шайба
с лапкой

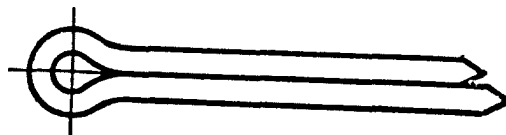


29.19. Стопорная шайба с
внутренним носком



30

30.



II.

5.13

18.8
187
18.5•
18.1
9

18.6
12.1
12.3
18.2
18.3
12.4
12.2

13.1
18.4
13.2
.1
11.3
.2
8
6.2
6.1
6.7'
6.6
18.9'

13.3
4.16
18 0
23
22.4

22.7
22.3

22.8
22.2•

22.5
22.1^
20.4

20.6
20.3

20.5
20.2n

20.7
20.1
7.1
7.2

15.13
16.4

15.10
16.3
17.4
16.8
16.2
15.12
14.3
24.4
24.2
24.1

24.3
24.5.

24.6
' .5

14.2
15.7
15.1
15.3.

16.1

17.3
15.6

14.1
15.2
17.1

17.2
6.5
19.3

19.7
7.4

* 7.5
7.3
19.4

19.8
19.1

:19 5

15.
45.9
19.2

49 6

'lg.4

6.4

6.3

5.4
 28.9
 28.26
 28.13
 28.4
 28.7'
 28.8
 28.11
 28.10
 28.20
 28.25
 28.24
 28.22
 23.21
 28.15
 28.16
 28.12
 <28.1
 28.18
 <28.2
 (28.19
 28.6
 28.17
 28.5
 '28.4
 28.3. •
 28.23
 2.8
 2.9
 2.5
 2.6
 2.13
 2.15
 2.19
 2! 12
 2.16
 '2.
 2.25
 2.26
 2.21
 2.22
 2.24
 223
 227
 2.28
 2.18
 2 10
 2! 11
 2.7
 2.17
 2.20
 2j
 2.4
 2.2
 2.3
 '

27 10
 27 12

27.11
27.6
27.1
27.2
27.4
27.5.
27.3.
27.8.
27.9
27.7
5.2
4.1
4.6
4.4
4.5
4.7
4.15
4.13

4.12
4.14
4.11-
4.10
4.3
4.2
4.8
4.9
5.16
1.1
1.2
1.5
1.6
1.3
1.4
5.14
5.15
18.11
3.1
3.7
3.6
3.5
3.3
3.2
3.4

5.7
5.8
5.9
29.2
29.4
29.3
29.1
29.5
29.12
29.7
29.8
29.6
29.14

29.15
29.15
29.10
29.19
29.16

29.11
29.18
19.9
29.17
5.1
5.12
5.11
26
26.4
26.3
26.5
26.2
30
25.7
25.6
25.8
25.9
25.10
-
25.15
-
25.13

25.12
25.11
-
25.14
25.1
25.4
25.5
25.2
25.3
21.2
21.3
21.6
21.4
21.7
21.5
21.8
21.1

- 1.1. Gewinde
- 1.2. Kegliges (konisches) Gewinde
- 1.3. Blechschraubengewinde
- 1.4. Holzschrauberigewinde
- 1.5. metrisches Gewinde
- 1.6. metrisches Feingewinde
- 2.1. Sechskantkopf
- 2.2. Sechskantkopf mit Telleransatz
- 2.3. Sechskantkopf mit Bund
- 2.4. Sechskantkopf mit Flansch (Flanschkopf)
- 2.5. Vierkantkopf
- 2.6. Vierkantkopf mit Bund
- 2.7. Dreikantkopf mit Bund
- 2.8. Achtkantkopf
- 2.9. Zwölfkantkopf mit Flansch
- 2.10. Hammerkopf
- 2.11. Hammerkopf mit Vierkantansatz
- 2.12. Halbrundkopf
- 2.13. Flachrundkopf
- 2.14. Halbrundkopf mit Nase
- 2.15. Flachrundkopf mit Vierkantansatz
- 2.16. Halbrundkopf mit Ovalansatz
- 2.17. Zylinderkopf
- 2.18. Linsenzylinderkopf
- 2.19. Linsenkopf
- 2.20. Flachkopf
- 2.21. Senkkopf
- 2.22. abgesetzter mit Senkkopf
- 2.23. Senkkopf mit Nase
- 2.24. Senkkopf mit Vierkantansatz
- 2.25. Linsensenkkopf
- 2.26. abgesetzter Linsensenkkopf
- 2.27. Randelkopf
- 2.28. Kordelkopf
- 3.1. Dickschaft (Schaftdurchmesser=Gewindedurchmesser)
- 3.2. Dunnschaft (Schaftdurchmesser<<Flankendurchmesser)
- 3.3. Paftschaft (Schaftdurchmesser>Gewindedurchmesser)
- 3.4. Dehnschaft (Schaftdurchmesser<Kerndurchmesser)
- 3.5. Ansatzschaft
- 3.6. Hohlschaft
- 3.7. Halbhohlschaft
- 4.1. ohne Kuppe
- 4.2. Linsenkuppe
- 4.3. Kegelkuppe
- 4.4. Spitze
- 4.5. Spitze, abgeflacht
- 4.6. Ringschneide
- 4.7. Kegelstumpf
- 4.8. Zapfen
- 4.9. Kernansatz
- 4.10. Ansatzkuppe
- 4.11. Ansatzspitze, abgeflacht
- 4.12. Schneidschraubenende mit Schabennut
- 4.13. Blechschrauben — Spitze

- 4.14. Blechschraiben — Zapfen
- 4.15. Gewindeformendes Schraubenende
- 4.16. Spitze (Nagelbohrer)
- 5.1. Sechskant
- 5.2. Vierkant
- 5.3. Dreikant
- 5.4. Achtkant
- 5.5. Zwölfkant
- 5.6. Innendreikant
- 5.7. Innenvierkant
- 5.8. Innensechskant
- 5.9. Innenkeilprofil
- 5.10. Innenzweiflzahn
- 5.11. gerader Schlitz-
- 5.12. Kreuzschlitz
- 5.13. Flügel
- 5.14. Randel
- 5.15. Kordel
- 5.16. Kreuzloch
- 6.1. Sechskantschraube
- 6.2. Sechskant — Paßschraube
- 6.3. Sechskantschraube mit Zapfen
- 6.4. Sechskantschraube mit Ansatzspitze
- 6.5. Sechskantschraube mit Dehnschaft
- 6.6. Sechskantschraube mit Bund
- 6.7. Sechskantschraube mit Flansch
- 7.1. Vierkantschraube
- 7.2. Vierkantschraube mit Bund
- 7.3. Vierkantschraube mit Zapfen
- 7.4. Vierkantschraube mit Ringschneide
- 7.5. Vierkantschraube mit Bund und Ansatzkuppe
- 8. Dreikantschraube
- 9. Achtkantschraube
- 10. Zwölfkantschraube mit Flansch
- 11.1. Hammerschraube
- 11.2. Hammerschraube mit Vierkantansatz
- 11.3. -Hammerschraube mit Nase
- 12.1. Flachrundschraube mit Vierkantansatz
- 12.2. Halbrundschraube mit Nase
- 12.3. Flachrundschraube mit Nase
- 12.4. Halbrundschraube mit Ovalansatz
- 13.1. Senkschraube mit Vierkantansatz
- 13.2. Senkschraube mit Nase
- 13.3. Kegelsenkschraube
- 14.1. Zylinderschraube mit Innensechskant
- 14.2. Zylinderschraube mit Innensechskant und Ansatzschaft
- 14.3. Senkschrauben mit Innensechskant
- 15.1. Zylinderschraube mit Schlitz
- 15.2. Flachkopfschraube mit Schlitz
- 15.3. Linsenzylinderschraube mit Schlitz
- 15.4. Linsenzylinderschraube mit Schlitz und Zapfen
- 15.5. Linsenzylinderschraube mit Schlitz und Ansatz
- 15.6. Linsenzylinderschraube mit Schlitz und Kreuzloch
- 15.7. Linsenzylinderschraube mit Schlitz und kleinem Kopf -
- 15.8. Senkschraube mit Schlitz
- 15.9. Senkschraube mit Schlitz und Zapfen
- 15.10. Linsensenkschraube mit Schlitz
- 15.11. Linsensenkschraube mit Schlitz und Zapfen

- 15.12. Senkschraube mit Halteschlitz
- 35.13. Halbrundschaube mit Schlitz
- 16.1. Linsenschraube mit Kreuzschlitz und Dehnschaft
- 16.2. Senkschraube mit Kreuzschlitz
- 16.3. Linsensenkschraube mit Kreuzschlitz
- 36.4.. Flachkopfschraube mit Kreuzschlitz
- 17.1. Sechskantschraube mit unverlierbarer Scheibe
- 17.2. Sechskantschraube mit unverlierbarem Federring und Scheibe
- 17.3. Linsenzylinderschraube mit unverlierbarem Federring
- 17.4. Linsensenkschraube mit unverlierbarer Facherscheibe
- 18.1. Augenschraube
- 38.2. Bogenklammerschraube
- 18.3. Flachklammerschraube
- 18.4. Tellerschraube mit Nasen
- 18.5. Hakenschraube
- 18.6. Hutschraube
- 18.7. Kegelschraube
- 18.8. Steinschraube
- 18.9. Steinschraube
- 18.10. Flügelschraube
- 18.11. Ringschraube
- 19.1. Gewindestift mit Schlitz und Kegelstumpf
- 19.2. Gewindestift mit Schlitz und Zapfen
- 19.3. Gewindestift mit Schlitz und Ringschneide
- 19.4. Gewindestift mit Schlitz und Spitze
- 19.5. - Gewindestift mit Innensechskant und Kegelstumpf
- 39.6. Gewindestift mit Innensechskant und Zapfen
- 19.7. Gewindestift mit Innensechskant und Ringschneide
- 19.8. Gewindestift mit Innensechskant und Spitze
- 20.1. Sechskantblechschraube
- 20.2. Zylinderblechschraube mit Schlitz
- 20.3. Senkblechschraube mit Schlitz'
- 20.4.. LinsenSenkblechschraube mit Schlitz
- 20.5. Senkblechschraube mit Kreuzschlitz
- 20.6. Linsensenkblechschraube mit Kreuzschlitz
- 20.7. Flachkopf-Blechschraube mit Kreuzschlitz
- 21.1. Sechskantholzschraube
- 21.2. Vierkantholzschraube
- 21.3. Halbrundholzschraube mit Schlitz
- 21.4. Linsensenkholzschraube mit Schlitz
- 21.5. Senkholzschraube mit Schlitz
- 21.6. Halbrundholzschraube mit Kreuzschlitz
- 21.7. Linsensenkholzschraube mit Kreuzschlitz
- 21.8. Senkholzschraube mit Kreuzschlitz
- 22J. Sechskant-Schneidschraube
- 22.2. Zylinder-Schneidschraube mit Schlitz
- 22.3. Senk-Schneidschraube mit Schlitz
- 22.4. Linsensenk-Schneidschraube mit Schlitz
- 22.5. Linsenzylinder-Schneidschraube mit Kreuzschlitz
- 22.6. Senk-Schneidschraube mit Kreuzschlitz
- 22.7. Linsensenk-Schneidschraube mit Kreuzschlitz
- 23. Sechskantschraube, gewindefurchend
- 24.1. Randelschraube
- 24.2. Randelschraube mit Spitze
- 24.3. Randelschraube mit Ansatzspitze
- 24.4. Pandelschraube mit Ringschneide

- 24.5. Randelschraube mit Linsenkuppe
- 24.6. Randelschraube mit Zapfen
- 25.1. Zylinderstift
- 25.2. • Zylinderstift mit Innengewinde
- 25.3. Nietstift .
- 25.4. Zylinderkerbstift
- 25.5. Kegelkerbstift
- 25.6. 'Kegelstift mit Spreizende
- 25.7. .Kegelstift
- 25.8. Kegelstift mit Innengewinde
- 25.9. .Kegelstift mit Gewindezapfen
- 25.10. Spannstift
- 25.11. Gewindestift mit Schlitz, Schaft und Kegelstumpf
- 25.12. Gewindestift mit Innensechskant, Schaft und Kegelstumpf
- 25.13. Gewindestift mit Innensechskant, Schaft und Spitze
- 25.14. Gewindestift mit Innensechskant, Schaft und Zapfen
- 25.15. Gewindestift mit Innensechskant, Schaft und Ringschneide
- 26.1. Stiftschraube
- 26.2. Stiftschraube mit Dehnschaft
- 26.3. Gewindebolzen
- 26.4. Anschweißende
- 26.5. Schraubenbolzen ohne Dehnschaft und Zapfen
- 27.1. Halbrundniet
- 27.2. Flachrundniet
- 27.3. Senkniet
- 27.4. Linsenniet
- 27.5. flacher Linsenniet
- 27.6. Flachkopfniet
- 27.7. Hohl­niet mit Linsenkopf
- 27.8. Hohl­niet mit Flachkopf
- 27.9. Hohl­niet mit Senkkopf
- 27.10. Halb-Hohl­niet mit Flachkopf
- 27.11. Halb-Hohl­niet mit Senkkopf
- 27.1'2. Halb-Hohl­niet mit Halbrundkopf
- 28.1. Sechskantmutter ¹
- 28.2. Flache Sechskantmutter
- 28.3. Sechskantmutter mit Bund
- 28.4. Sechskantmutter mit- Flansch
- 28.5. Sechskantmutter mit Ansatz
- 28.6. Sechskant-Anschweißmutter
- 28.7. Vierkantmutter
- 28.8. Flache Vierkantmutter
- 28.9. Anker­mutter
- 28.10. Vierkantmutter mit Bund
- 28.11. Vierkant-Anschweißmutter
- 28.12u Dreikantmutter mit Bund
- 28.13. Achtkantmutter
- 28.14. Zwölfkantmutter mit Flansch
- 28.15. Sechskantmutter mit Klemmteil, ganzmetallisch
- 28.16. Sechskantmutter mit Klemmteil, mit nichtmetallischem Einsatz
- 28.17. Kronenmutter
- 28.18. Kronenmutter
- 28.19. Flache Kronenmutter
- 28.20. Hutmutter
- 28.21. Randelmutter
- 28.28. Schlitzmutter
- 28.23. Nutmutter
- 28.24. Kreuzlochmutter

- 28.25. Zweilochmutter
- 28.26. Flugelmutler
- 29.1. Scheibe
- 29.2. Vierkantscheibe
- 29.3. Scheibe mit Vierkantloch
- 29.4. Keilscheibe
- 29.5. Federring
- 29.6. Federring, aufgebogen
- 29.7. Mehrfachfederring
- 29.8. Federscheibe, gewolbt
- 29.9. Facherscheibe, außen gezahnt
- 29.10. Facherscheibe, innen gezahnt
- 29.11. Facherscheibe, außen gezahnt, keglig
- 29.12. Federscheibe, gewellt
- 29.13. Zahnscheibe, innen gezahnt
- 29.14. Zahnscheibe, außen gezahnt
- 29.15. Zahnscheibe, außen gezahnt, keglig
- 29.16. Sicherungsblech mit zwei Lappen
- 29.17. Sicherungsblech mit Nase, außen
- 29.18. Sicherungsblech mit Lappen
- 29.19. Sicherungsblech mit Nase, innen
- 30. • Splint

IV.

- 1.1. Screw thread
- 1.2. Taper screw thread
- 1.3. Tapping screw thread
- 1.4. Wood screw thread
- 1.5. Metric thread (SI)
- 1.6.. Metric fine pitch thread
- 2.1'. Hexagon head
- 2.2. Hexagon head with washer face
- 2.3. Hexagon head with collar
- 2.4. Hexagon head with flange
- 2.5. Square head
- 2.6. Square head with collar
- 2.7. Triangle head with collar
- 2.8. Octagonal head
- 2.9. 12point flange head
- 2.10. T-head
- 2.11. T-head with square neck
- 2.12. Round head
- 2.13. Mushroom head
- 2.14. Round head with nib
- 2.15. Mushroom head with square neck
- 2.16. Round head with oval neck
- 2.17. Cheese head
- 2.18. Raised cheese head
- 2.19. Binding head
- 2.20. Pan head
- 2.21: Countersunk head
- 2.22. Undercut countersunk head
- 2.23. Countersunk head with nib
- 2.24. Countersunk head with square neck

- 2.25. Raised countersunk head
- 2.26. Undercut raised countersunk head
- 2.27. Straight knurled head
- 2.28. Diamond knurled head
- 3.1. Normal shank
- 3.2. Reduced shank
- 3.3. Increased shank
- 3.4. Waisted shank
- 3.5. Shoulder
- 3.6. Tubular shank
- 3.7. Semi-tubular shank
- 4.1. • -As-rolled end
- 4.2. Rounded-end -
- 4.3. Chamfered end
- 4.4. Cone point
- 4.5. Truncated cone point
- 4.6. Cup point
- 4.7. Flat point
- 4.8. Long dog point
- 4.9. Short dog point
- 4.10. Short dog point with rounded end
- 4.11. Short dog point with truncated cone end
- 4.12. Scrape point
- 4.13; 4.14 End for self-tapping screw
- 4.15. End for thread rolling screw
- 4.16. Gimlet
- 5.1. - Hexagon
- 5.2. Square
- 5.3. Triangle
- 5.4. Octagon
- 5.5. 12point
- 5.6. Triangle
- 5.7. : Square socket
- 5.8. Hexagon socket
- 5.9. Six-spline socket
- 5.10. 12point socket
- 5.11. Slot
- 5.12. Cross recess
- 5.13. Wing
- 5.14. Straight knurl
- 5.15. Diamond knurl
- 5.16. Cross hole
- 6.1. Hexagon bolt
- 6.2. Hexagon fit bolt
- 6.3. Hexagon set screw with full dog point
- 6.4. Hexagon set screw with half dog point and flat edge point
- 6.5. Hexagon screw with waisted shank
- 6.6. Hexagon bolt with collar
- 6.7. Hexagon bolt with flange
- 7.1. Square head bolt
- 7.2. Square head bolt with collar
- 7.3. Square set screw with half dog point
- 7.4. Square set screw with cup point
- 7.5. Square set screw with collar and half dog point ^With rounded end
- 9. Triangle head bolt with collar
- 9. Octagon bolt
- 10. 12point flange screw
- 11.1. T-head bolt

- 11.2. T*head bolt with square neck
- .11.3. -head bolt with double nib
- 12.1. Mushroom head square neck bolt
- 12.2. Cup head nib bolt
- 12.3. Mushroom head nib bolt
- 12,4.' Cup oval neck bolt
- 13.1. Flat countersunk square neck bolt
- .13.2. Flat countersunk nib bolt
- 13.3. Deep flat countersunk bolt
- 14.1. Hexagon socket head cap screw
- 34.2. Hexagon gocket head shoulder screw
- 34.3. Hexagon socket countersunk cap head screw
- 15.1. Slotted cheese head screw
- 15.2. Slotted pan head screw
- 15.3. Slotted raised cheese head screw
- 15.4. Slotted raised cheese head screw with full dog point
- 15.5. Slotted raised cheese head fit bolt
- 15.6. Slotted capstan'screw
- 15.7. Slotted small raised cheese head screw
- 15.8. Slotted countersunk head screw
- 15.9. Slotted countersunk head screw with full dog point
- 15.10. Slotted raised countersunk head screw '
- 15.11. Slotted raised countersunk head screw with full dog point
- 15.12. Countersunk head screw with forgel slot
- 35.13. Slotted'round head screw
- 16.1. - Cross recessed raised cheese head screw
- 16.2. Cross recessed countersunk head screw
- 36.3. Cross recessed raised countersunk head screw
- 36.4. Cross recessed pan head screw
- 17.1. Hexagon screw with captive plain washer
- ,37.2_v Hexagon screw with captive spring and plain washer .
- 17.3. ' Raised cheese head screw with captiVe spring washer
- 17.4. Raised countersunk head screw with captive countersunk serrated lock washer
- 18.1. Eye bolt
- 18.2. Mushroom head anchor bolt
- 18.3. Flat head anchor bolt
- 38.4. Belting bolt
- 18.5. Clip bolt
- 18.6. Acorn hexagon head bolt
- 18.7. Conical bolt
- 18.8. Masonry bolt
- 18.9. Foundation bolt
- 18.HX Wing screw
- 18.11. Lifting eye bolt
- 19.1. Slotted set screw with flat point
- 19.2. Slotted set screw with full dogjoint
- 19.3. Slotted set screw with cup point
- 19.4. Slotted set screw with cone point
- 19.5. Hexagon socket set screw with flat point
- 19.6. Hexagon socket set screw with full dog point
- 19.7. Hexagon socket screw with cup point
- 19.8. Hexagon socket set screw with cone point
- 20.1. Hexagon head tapping screw
- 20.2. Slotted pan head tapping screw
- 20.3. Slotted countersunk head tapping screw
- 20.4. Slotted raised countersunk head tapping screw
- 20.5. Cross recessed countersunk head tapping screw

- 20.6. **Cross recessed raised countersunk head tapping screw**
- 20.7. Gross recessed pan head tapping screw
- 21.1. Hexagon head wood screw
- 21.2. Square head wood screw,
- 21.3. Slotted round head wood screw
- 21.4. Slotted raised countersunk head wood screw
- 21.5. Slotted countersunk head wood screw
- 21.6. Cross recessed pan head wood screw
- 21.7.. Cross recessed raised countersunk head wood screw
- 21.8. Cross recessed countersunk head wood screw
- 22.1. Hexagon head thread cutting screw
- 22.2. Slotted cheese head thread cutting screw
- 22.3. Slotted countersunk head thread cutting screw
- 22.4. Slotted raised countersunk head thread cutting screw
- 22.5. Cross recessed pan head thread cutting screw
- 22.6. Cross recessed countersunk head thread cutting screw
- 22.7. Cross recessed raised countersunk head thread cutting screw
- 23. Hexagon head thread forming screw
- 24.1. Straight knurled head screw
- 24.2.. Straight knurled head screw with cone point
- 24.3. Straight knurled head screw with short dog point with truncated cone end
- 24.4. Straight knurled head screw with cup point
- 24.5. Straight knurled head screw with rounded point
- 24.6. Straight knurled head screw with full dog point
- 25.1. Cylindrical pin
- 25.2. Cylindrical pin with internal thread
- 25.3. Cylindrical pin with cup points
- 25.4. Cylindrical notched pin
- 25.5. Cylindrical notched pin with conical notches
- 25.6. Tension taper pin
- 25.7. Taper pin
- 25.8. Taper pin with internal thread
- 25.9.. Taper pin with threaded stem
- 25.10. Spring type straight pin
- 25.11. Slotted headless screw with flat chamfered end
- 25.12. Hexagon socket headless screw with flat chamfered end
- 25.13. Hexagon socket headless screw with truncated cone point
- 25.14. Hexagon socket headless screw with full dog point
- 25.15. Hexagon socket headless screw with cup point
- 26.1. Stud
- 26.2. Waisted stud
- 26.3. Stud bolt
- 26.4. Weld ,stud
- 26.5. Double end stud with full shank
- 27.1. Round head rivet
- 27.2. Mushroom head rivet
- 27.3. Countersunk head rivet
- 27.4. Raised countersunk head rivet
- 27.5. Shallow raised countersunk head rivet
- 27.6. Flat head rivet
- 27.7. Round head hollow rivet
- 27.8. Flat head hollow rivet
- 27.9. Countersunk head hollow rivet
- 27.10. Flat head semi-hollow rivet
- 27.11. Countersunk head semi-hollow rivet
- 27.1:2. Round head semi-hollow rivet
- 28.1. Hexagon nut

- 28.2. Hexagon thin nut
- 28.3. Hexagon nut with collar
- 28.4. Hexagon nut with flange
- 28.5. Washer faced hexagon nut
- 28.6. Hexagon weld nut
- 28.7. Square nut
- 28.8. Square thin nut without chamfer
- 28.9. Foundation nut
- 28.10. Square nut with collar
- 28.11. Square weld nut
- 28.12. Triangle nut with collar
- 28.13. Octagon nut
- 28.14. 12point flange nut
- 28.15. Prevailing torque type hexagon nut with deformed thread
- 28.16. Prevailing torque type hexagon nut with ring polymer insert
- 28.17. Hexagon slotted nut
- 28.18. Hexagon castle nut
- 28.19. Hexagon thin castle nut
- 28.20. Acorn nut
- 28.21. Knurled nut
- 28.22. Slotted round nut
- 28.23. Slotted round nut for hook-spanner .
- 26.24. Round nut with set pin holes in side
- 28.25. Round nut with drilled holes in one face
- 28.26. Wing nut
- 29.1. Plain washer
- 29.2. Square washer with round hole
- 29.3. Round washer with square hole
- 29.4. Square taper washer
- 29.5. Single coil spring lock washer with square ends
- 29.6. Single coil spring lock washer with tang ends,
- 29.7. Double coil spring lock washer
- 29.8. Curvet spring washer
- 20.9. Serrated lock washer external teeth
- 29.10. Serrated lock washer internal teeth
- 29.11. Countersunk serrated external toothed lock washer
- 29.12. Wave spring washer
- 29.13. Lock washer external teeth
- 29.14. ' Lock washer internal teeth
- 29.15. Countersunk external toothed lock washer
- 29.16. Tab washer with long tab and wing
- 29.17. External tab washer
- 29.18. Tab washer with long tab
- 29.19. Internal tab washer
- 30. Split pin

V.

- 1.1. Filetage cylindrique
- 1.2. Filetage conique
- 1.3. Filetage de vis a tole
- 1.4? Filetage de vis a bois
- 1.5. Filetage metrique (SI)
- 1.6. Filetage metrique a pas fin
- 2.1. Tete hexagonale

- 2.2. Tete hexagonale collerette
- 2.3. Tete hexagonale embase cylindrique
- 2.4. Tete hexagonale embase cylindro-tronconique
- 2.5. Tete carree
- 2.6. Tete carree embase cylindrique
- 2.7. Tete triangulaire embase cylindrique
- 2.8. Tete octogonale
- 2.9. Tete binexagonale
- 2.10. Tete rectangulaire angles abattus
- 2.11. Tete rectangulaire a angles abattus collet carre
- 2.12. Tete ronde
- 2.13. Tete bombee
- 2.14. Tete ronde a ergot
- 2.15. Tete bombee a collet carre
- 2.16. Tete ronde a collet carre large
- 2.17. Tete cylindrique
- 2.18; 2.19. Tete cylindrique bombee
- 2.20. Tete cylindrique a depouille
- 2.21. Tete fraisee
- 2.22. Tete fraisee a epaulement.
- 2.23. Tete fraisee ergot
- 2.24. Tete fraisee a collet
- 2.25. Tete fraisee bombee
- 2.26. Tete fraisee bombee a epaulement
- 2.27. Tete cylindrique molettee
- 2.28. Tete molettee croisee
- 3.1. Tige-normale
- 3.2. Tige reduite
- 3US- Tige ajustable
- Tige allegee
- 3.5. Tige ajustable a bout filete reduit
- 3.6. Tige tubulaire
- 3.7. Tige demi-tubulaire
- 4.1. Bout plat
- 4.2. Bout bombe
- 4.3. Bout chanfreine
- 4.4. Bout pointu
- 4.5. Bout pilote
- 4.6. Cuvette
- 4.7. Bout chanfreine
- 4.8. Teton long
- 4.9. Teton court
- 4.10. Teton court bombe
- 4.M. Teton tronconique
- 4.12. Bout tronconique de vis t61e
- 4.13. Bout pointu de vis t61e
- 4.14. Bout plat de vis a t61e
- 4.15. Bout de vis auto-taraudeuse par deformation de matiere
- 4.16. Foret
- 5.1. Hexagonal
- 5.2. Carre
- 5.3. Triangulaire
- 5.4. Octogonal
- 5.5. Bihexagonal
- 5.6. Triangle creux
- 5.7. Carre creux
- 5.8. Six pans creux

- 5.9. Empreinte six cannelures
- 5.10. Empreinte bihexagonale
- 5.11. Fente
- 5.12. Empreinte cruciforme
- 5.13. Oreilles
- 5.14. Molette
- 5.15. Molette croise
- 5.16. Perçage en croix
- 6.1. Vis a tete hexagonale
- 6.2. Corps de boulon ajustable a tete hexagonale avec gorge de degagement
- 6.3. Vis a tete hexagonale a teton avec gorge de degagement
- 6.4. Vis a tete hexagonale, a teton cylindro-tronconique
- 6.5. Vis a tete hexagonale a tige allgee
- 6.6. Vis a tete hexagonale a embase cylindrique
- 6.7.: Vis a tete hexagonale a embase cylindro-tronconique
- 7.1. Vis a tete carree
- 7.2. Vis a tete carree a embase cylindrique
- 7.3.4 Vis a tete carree a teton court
- 7.4. Vis a tete carree a cuvette
- 7.5. Vis a tete carree a embase cylindrique a teton court
- 8. Vis a tete triangulaire a embase cylindrique
- 9. Vis a tete octogonale
- 10. Vis a tete bihexagonal
- 11.1. Vis a tete rectangulaire a angles abattus
- 11.2. Vis a tete rectangulaire a angles abattus a collet carre
- 11.3. Vis a tete rectangulaire a angles, abattus a deux ergots
- 12.1. Corps de boulon a tete bombee aplatie, a "collet carre
- 12.2. Corps de boulon a tete ronde, a ergot
- 12.3. Corps de boulon a tete bombee, a ergot
- 12.4. Corps de boulon a tete roride, a collet carre large
- 13.1. Corps de boulon a tete fraisee, a collet carre
- 13.2. Corps de boulon a tete fraisee, a ergot
- 13.3. Corps de boulon de roue
- 14.1. Vis a tete cylindrique a six pans creux
- 14.2. Vis ajustable a tete cylindrique & six pans creux et a bout filete reduite
- 14.3. Vis a tete fraisee a six pans creux
- 15.1. Vis a tete cylindrique fendue
- 15.2. Vis a tete cylindrique a depouille fendue
- 15.3. Vis a tete cylindrique bombee large fendue
- 15.4. Vis a tete cylindrique bombee mince fendue, a teton
- 15.5. Vis a tete cylindrique bombee mince fendue, a tige ajustable
- 15.6. Vis a tete cylindrique bombee fendue avec perçage en croix
- 15.7. Vis a tete cylindrique bombee reduite fendue
- 15.8. Vis a tete fraisee fendue
- 15.9. Vis a tete fraisee fendue, a teton
- 15.10. Vis a tete fraisee bombee fendue
- 15.11. Vis a tete fraisee bombee fendue, a teton
- 15.12. Vis a tete fraisee a empreinte rectangulaire ou a fente forgee
- 15.13. Vis a tete ronde fendue
- 16.1. Vis a tete cylindrique bombee a empreinte cruciforme
- 16.2. Vis a tete fraisee a empreinte cruciforme
- 16.3. Vis a tete fraisee bombee a empreinte cruciforme
- 16.4. Vis a tete cylindrique a depouille a empreinte cruciforme..
- 17.1. Vis a tete hexagonale a rondelle cylindrique plate incorporee
- 17.2. Vis a tete hexagonale a rondelles (elastique et cylindrique plate) incorporees
- 17.3. Vis a tete cylindrique bombee, a rondelle elastique incorporee

- 17.4. Vis tête fraisée bombée fendue, à rondelle dents extérieures, concave, incorporée
- 18.1. Corps de boulon à œil
- 18.2. Corps de boulon 1 1 bombée agrafe (1 ou 2)
- 18.3. Corps de boulon à tête plate agrafe (1 ou 2)
- 18.4. Corps de boulon de courroie
- 18.5. Crampon fileté
- 18.6. Vis à tête hexagonale à calotte
- 18.7. Vis conique
- J8.8. Tige de scellement à queue de carpe
- 18.9. Tige de scellement
- 18.10. Vis à oreilles
- 18.11. Vis à anneau
- 19.1. Vis sans tête, fendue, entièrement filetée, à bout chanfreiné
- 19.2. Vis sans tête, fendue, entièrement filetée, à téton
- 19.3. Vis sans tête, fendue, entièrement filetée, à cuvette
- 19.4. Vis sans tête, fendue, entièrement filetée, à bout pointu
- 19.5. Vis sans tête, à six pans creux, entièrement filetée, à bout chanfreiné
- 19.6. Vis sans tête, à six pans creux, entièrement filetée, à téton
- 19.7. Vis sans tête, à six pans creux, entièrement filetée, à cuvette
- 19.8. Vis sans tête, à six pans creux, entièrement filetée, à bout pointu
- 20.1. Vis à tôle à tête hexagonale, à bout pointu; à bout plat
- 20.2. Vis à tôle à tête cylindrique à dépouille fendue, à bout pointu; à bout plat
- 20.3. Vis à tôle à tête fraisée fendue, à bout pointu; à bout plat
- 20.4. Vis à tôle à tête fraisée bombée fendue, à bout pointu; à bout plat
- 20.5. Vis à tôle à tête fraisée à empreinte cruciforme, à bout pointu; à bout plat
- 20.6. Vis, à tôle à tête fraisée bombée à empreinte cruciforme à bout pointu; à bout plat
- 20.7. Vis à tôle à tête cylindrique à dépouille à empreinte cruciforme, à bout pointu; à bout plat
- 21.1. Vis à bois à tête hexagonale
- 21.2. Vis à bois à tête carrée
- 21.3. Vis à bois à tête ronde fendue
- 21.4. Vis à bois à tête fraisée bombée fendue
- 21.5. Vis à bois à tête fraisée fendue
- 21.6. Vis à bois à tête ronde à empreinte cruciforme
- 21.7. Vis à bois à tête fraisée bombée à empreinte cruciforme
- 21.8. Vis à bois à tête fraisée à empreinte cruciforme
- 22.1. Vis auto-taraudeuse à tête hexagonale
- 22.2. Vis auto-taraudeuse à tête cylindrique fendue
- 22.3. Vis auto-taraudeuse à tête fraisée fendue
- 22.4. Vis auto-taraudeuse tête fraisée bombée fendue
- 22.5. Vis auto-taraudeuse tête cylindrique dépouille empreinte cruciforme
- 22.6. Vis auto-taraudeuse tête fraisée à empreinte cruciforme
- 22.7. Vis auto-taraudeuse tête fraisée empreinte cruciforme
- 23. Vis auto-taraudeus par déformation de matière
- 24.1. Vis à tête cylindrique moletée
- 24.2. Vis tête cylindrique moletée, bout pointu
- 24.3. Vis à tête cylindrique moletée téton cylindro-tronconique
- 24.4. Vis tête cylindrique moletée cuvette
- 24.5. Vis à tête cylindrique moletée bout bombé
- 24.6. Vis à tête cylindrique moletée téton long
- 25.1. Goupille cylindrique
- 25.2. Goupille cylindrique filet femelle
- 25.3. Goupille cylindrique cuvette
- 25.4. Goupille cylindrique taille
- Goupille cylindrique tallies coniques

- 25.6. Goupille conique fenduc
- 25.7.: Goupille conique
- 25.8. Goupille conique a litet
- 25.9. Goupille conique a tourillon filetr
- 25.10. Goupille elastique
- 25.11. Vis sans fendue, partiellement filetee, & bout chanfreinf
- 25.12. Vis sans tete a six pans creux, partiellement, filetee, a bout chanfreinfe
- 25.13. Vis sanstête a six pans creux, partiellement filetee, & bout pointu
- 25.14. Vis sans tete a six pans creux, partiellement filetfce, a teton
- 25.15. Vis sans a six pans creux-* partiellement filetfce, d cuvette
- 26.1. Goujon
- 26.2. Goujon a corps allege
- 26.3. Tige filetee
- 26.4. Tige a soude
- 26.5. Goujon a deux gorges de degagement et a teton
- 27.1. Rivet a tete ronde
- 27.2. ; Rivet a tete bombee
- 27.3. Rivet a tete fraisee
- 27.4. - Rivet a tete fraisee bombee
- 27.5. Rivet a tete fraisee bombee bas
- 27.6. Rivet a tete plate
- 27.7. Rivet creux a tete ronde
- 27.8. Rivet creux a tete plate
- 27.9. Rivet creux a tete fraisee
- 27.10. Rivet semi-creux a tete plate
- 27.11. Rivet semi-creux a tete fraisee
- 27.12. Rivet semi-creux a tete ronde
- 28.1. Erou hexagonal
- 28.2. Erou hexagonal bas
- 28.3. Erou hexagonal a embase cylindrique
- 28.4. Erou hexagonal a embase cylindro-ironconique
- 28.5. Erou hexagonal a collerette
- 28.6. Erou hexagonal a souder
- 28.7. Erou carre
- 28.8. Erou carre bas
- 28.9. Erou de tige d'ancrage
- 28.10. Erou carre a embase cylindrique
- 28.11. Erou carre a souder
- 28.12. Erou triangulaire h embase cylindrique
- 28.13. Erou octogonal
- 28.14. Erou bihexagonal
- 28.15. Erou auto-freine hexagonal a filet deforme
- 28.16. Erou auto-freine hexagonal anneau polimere
- 28.17. Erou hexagonal a creneaux
- 28.18. Erou hexagonal a creneaux degages
- 28.19. Erou hexagonal bas a creneaux dlages
- 28.20. Erou borgne a calotte
- 28.21. Erou molete
- 28.22. ; 28.23. Erou cylindrique a fente
- 28.24. Erou cylindrique a trous perces en croix
- 28.25. Erou cylindrique a deux trous perdss sur une fase
- 28.26. Erou a oreilles
- 29.1. Rondelle plats
- 29.2. Plaquette carree
- 29.3. Rondelle plate a trou carree
- 29.4. Plaquette oblique
- 29.5. Rondelle elastique simple spire sans bees
- 29.6. Rondelle elastique simple spire aves bees-

- 29.7. Rondelle élastique double spire sans bees
- 29.8. Rondelle élastique centrée
- 29.9. Rondelle élastique plane à dents chevauchantes extérieures
- 29.10. Rondelle élastique plane à dents chevauchantes intérieures
- 29.11. Rondelle élastique concave à dents chevauchantes extérieures
- 29.12. Rondelle élastique ondulée
- 29.13. Rondelle élastique plane à dents espacées extérieures
- 29.14. Rondelle élastique plane à dents espacées intérieures
- 29.15. Rondelle élastique concave à dents espacées extérieures
- 29.16. Frein d'écrou d'équerre à aileron
- 29.17. Rondelle frein d'écrou à ergot extérieur
- 29.18. Frein d'écrou droit à aileron
- 29.19. Rondelle frein d'écrou à ergot intérieur
- 30. Goupille cylindrique fendue

1.

. . ; . .

2.

2941

-
30.09.86

3.

2000 .,

— 10

4.

6300—88

5.

, 1891—79

6.

7.

-

-

11708—82

8.

1989 (1990 .
11—89);

1,

-